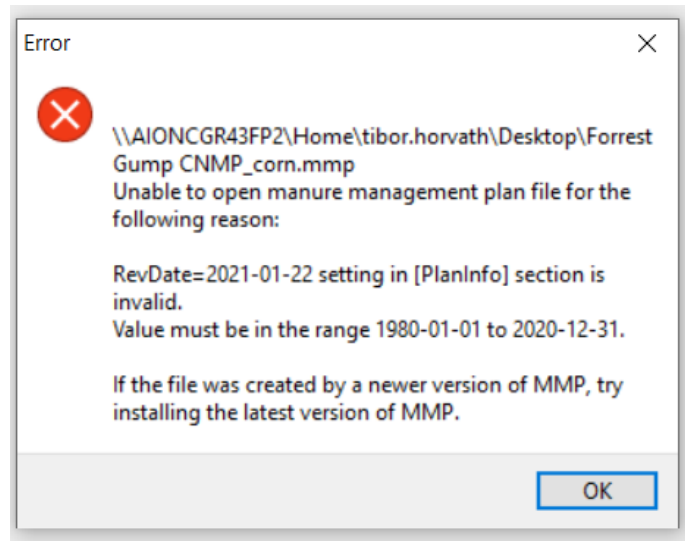


Workaround the MMP date problem

01/22/2021

To open a saved MMP file that is not opening due to this error message:



Close the file and close MMP. Find the .mmp file, and open it with Notepad:

```
Forrest Gump CNMP_corn - Notepad
File Edit Format View Help
; Manure Management Plan file - do not modify.

[PlanInfo]
FileVers=1
Source=MMP 0.3.8.2
RevDate=2021-01-22
RevTime=17:03:34
InitLookup=ms
InitDate=2017-10-20
SoilDate=2017-01-11
R2Db=\\AIONCGR43FP2\Home\tibor.horvath\Desktop\MS Example CNMP.gdb
R2Climate=climates\USA\Mississippi\Forrest County
R2SoilSurv=soils\SSURGO\Forrest County, Mississippi
PlanYears=1
Title=
Author=
Company=
```

Change the date to 2020 from 2021 and save the file with Notepad.

MMP will be able to reopen the file without error message.

Please contact Tibor Horvath Tibor.Horvath@usda.gov or 336-312-4804 for more info.

