

From: [Soil & Water Conservation Program](#)
To: [DNR.Soil and Water Conservation Districts staff](#); [Soil & Water Conservation Program](#)
Cc: [DNR.MGS SWC Staff](#)
Subject: FW: Important: Immediate Action Required
Date: Thursday, June 25, 2026 12:10:54 PM
Attachments: [Outlook-U.S. Depar.png](#)
[VDI Technical Support POCs.docx](#)
[Instructions swcd vdi data backup.docx](#)
[image001.png](#)

Good afternoon.

Here is the instruction email from NRCS for the CITRIX change.

Thank you,

MoDNR Soil and Water Conservation Program
573-751-4932 | dnr.mo.gov



Please take a few minutes to complete our [Customer Satisfaction Survey](#). Thank you.

Get [Outlook for iOS](#)

From: Rivera Delgado, Brandon - FPAC-NRCS, MO <brandon.riveradelgado@usda.gov>
Sent: Thursday, 25 June 2026 07:38:33
To: Phillips, Grant - FPAC-NRCS, MO <grant.phillips@usda.gov>; Plymell, Charli - FPAC-NRCS, MO <charli.plymell@usda.gov>; Higley, Dean - FPAC-NRCS, MO <dean.higley@usda.gov>
Cc: Goodrich, Nate - FPAC-NRCS, MO <nate.goodrich@usda.gov>; Mascaro, Selma - FPAC-NRCS, MO <selma.mascaro@usda.gov>; Plassmeyer, Jim <jim.plassmeyer@dnr.mo.gov>; Rives, Aaron - FPAC-NRCS, MO <aaron.rives@usda.gov>; King, Andrea - FPAC-NRCS, MO <andrea.king@usda.gov>; Bennett, Gorman - FPAC-NRCS, MO <gorman.bennett@usda.gov>; Walker, Nancy - FPAC-NRCS, MO <nancy.walker@usda.gov>; Johnson, Ashley - FPAC-NRCS, MO <ashley.johnson2@usda.gov>
Subject: FW: Important: Immediate Action Required

Good Morning everyone,

This is the email in regards to the Citrix VDIP server shutting down.

For everyone's awareness.

Thanks.

Brandon L Rivera Delgado

Area Business Tool Specialist – Area 3
Natural Resource Conservation Services



U.S. DEPARTMENT OF AGRICULTURE

Natural Resource Conservation Services
330 Interstate Drive, Wentzville, MO, 63385
Direct Line: 636-229-0201
Office Phone: (636)-922-2833, Ext. 3 | Cell Phone: (636)-466-9294

From: Owen, Whityn - FPAC-NRCS, OR <whityn.owen@usda.gov>

Sent: Wednesday, June 24, 2026 5:13 PM

To: Madron, Aaron - FPAC-NRCS, MO <Aaron.Madron@mo.nacdnet.net>; Reynolds, Aaron - FPAC-NRCS, TX <aaron.reynolds@usda.gov>; Arndt, Adam - FPAC-NRCS, MN <adam.arndt@mn.nacdnet.net>; Birkner, Adam - FPAC-NRCS, IL <adam.birkner@usda.gov>; Gransee, Adrienne - FPAC-NRCS, MN <Adrienne.Gransee@mn.nacdnet.net>; Rains, Aidan - FPAC-NRCS, MO <Aidan.Rains@mo.nacdnet.net>; Woltman, Aidan - FPAC-NRCS, IL <Aidan.Woltman@il.nacdnet.net>; Stroup, Ainslee - FPAC-NRCS, IL <Ainslee.Stroup@usda.gov>; Frieling, Ainsley - FPAC-NRCS, MO <Ainsley.Frieling@MO.nacdnet.net>; Hayes, Alec - FPAC-NRCS, IL <Alec.Hayes@il.nacdnet.net>; Johnson, Alex - FPAC-NRCS, AL <alex.johnson@usda.gov>; Zimmerlein, Alexis - FPAC-NRCS, IL <Alexis.Zimmerlein@il.nacdnet.net>; McClendon, Alicia - FPAC-NRCS, MO <Alicia.McClendon@mo.nacdnet.net>; Evans, Alisa - FPAC-NRCS, MO <alisa.evans@usda.gov>; Long, Allen - OCIO-CEC, IL <allen.long@usda.gov>; Moore, Allen - FPAC-NRCS, FL <allen.moore@usda.gov>; McKenzie, Allison - FPAC-NRCS, WY <allison.mckenzie@usda.gov>; Mettenburg, Allison - FPAC-NRCS, IL <Allison.Mettenburg@il.nacdnet.net>; Olson, Alyse - FPAC-NRCS, IL <Alyse.Olson@il.nacdnet.net>; Browning, Amanda - FPAC-NRCS, MO <Amanda.Browning@mo.nacdnet.net>; Horstmann, Amanda - FPAC-FSA, MO <Amanda.Horstmann@usda.gov>; Ewen, Amber - FPAC-NRCS, IL <amber.ewen@il.nacdnet.net>; Halker, Amy - FPAC-NRCS, NC <amy.halker@usda.gov>; Neier, Amy - FPAC-NRCS, MO <Amy.Neier@mo.nacdnet.net>; Hogsett, Andrea - FPAC-NRCS, MO <Andrea.Hogsett@mo.nacdnet.net>; Bostic, Andrew - FPAC-NRCS, FL <Andrew.Bostic@usda.gov>; Hatfield, Andrew (CTR) - OCIO-CEC, WV <Andrew.Hatfield@usda.gov>; Hilliker, Andrew - OCIO-CEC, CO <Andrew.Hilliker@usda.gov>; Molder, Andrew - FPAC-NRCS, MO <Andrew.Molder@mo.nacdnet.net>; Parks, Andrew - FPAC-NRCS, IL <Andrew.Parks@il.nacdnet.net>; Phillips, Andrew - FPAC-NRCS, IL <Andrew.Phillips2@il.nacdnet.net>; Schlichting, Andy - FPAC-NRCS, IL <andy.schlichting@usda.gov>; Timcke, Ann - FPAC-NRCS, IL <Ann.Timcke@il.nacdnet.net>; Fernow, Anna - FPAC-NRCS, OK <Anna.Fernow@ok.nacdnet.net>; Spainhower, Anna - FPAC-NRCS, MO <Anna.Spainhower@mo.nacdnet.net>; Jeffcoat, Annabella - FPAC-NRCS, MO <Annabella.Jeffcoat@mo.nacdnet.net>; Spivey, Annette - FPAC-NRCS, AL <annette.spivey@usda.gov>; Ochs, Anthony - FPAC-NRCS, IL <Anthony.Ochs@usda.gov>; Deters, Arika - FPAC-NRCS, MO <Arika.Deters@mo.nacdnet.net>; Aber, Ashley - FPAC-NRCS, IL <Ashley.Aber@il.nacdnet.net>; Curran, Ashley - FPAC-NRCS, IL <Ashley.Curran@usda.gov>; Fisk, Ashley - FPAC-NRCS, MO <Ashley.Fisk2@mo.nacdnet.net>; King, Ashley - FPAC-NRCS, MO <Ashley.King@mo.nacdnet.net>; Robert, Ashley - FPAC-NRCS, IL <ashley.robert@usda.gov>; Shilling, Ashley - FPAC-NRCS, MO <Ashley.Shilling@mo.nacdnet.net>; Matthews, Ashlyn - FPAC-NRCS, MO

Subject: Important: Immediate Action Required

Importance: High

Hello,

You are receiving this email because you have access to the NRCS "SWCD Win11" virtual desktop, accessible using Citrix.

Immediate Action is required to prevent data loss from this system.

Please read and follow these Instructions carefully.

All users of this system must complete the following 5-step process prior to **COB Friday, 6/26/2026**.

Steps (see detailed instructions with screenshots attached):

1. **Connect** and login to the **NRCS SWCD Win11 Prod** Virtual desktop using Citrix.
2. **Open** the Windows File Explorer in the virtual desktop environment
3. **Copy/paste** (if possible) or else **manually type** this path into the file explorer Address Bar:
\\aioccawe3fp0000.usda.net\drive_mappings
4. Double-click the **runme.cmd**
The Windows command shell window will open, the script will run, and you will be prompted to "*Click any key to continue...*"
5. **Click any key** to dismiss the Command Shell window, then Sign Out of the virtual desktop

Important:

- This system is being shut down and migrated. A new system will be provided as soon as possible.
- Our main concern is data backup and security: **Please avoid generating and saving new data files (map docs, pdfs, spreadsheets, docx, analyses, etc.) in this environment until further notice.**
- You may continue to use this system to access Conservation Desktop, Protracts, and other web applications, until further notice.

More information about the migration and replacement system is coming.

If you need assistance *accomplishing the above steps*, see the attached list of support Points of Contacts.

** Please do not contact support POCs with general questions about the migration or the replacement system. Support POCs are focused on providing assistance to end-users who are unable to complete the 5-step process listed above.

Thank you for your immediate assistance with this effort and thank you all for your hard work and program support!

Whityn

Whityn Owen
Acting Director, Mission Delivery Optimization Division
Office of the Senior Deputy Associate Chief



This electronic message contains information generated by the USDA solely for the intended recipients. Any unauthorized interception of this message or the use or disclosure of the information it contains may violate the law and subject the violator to civil or criminal penalties. If you believe you have received this message in error, please notify the sender and delete the email immediately.

SWDC Virtual Desktop Data Backup Technical Support

Please contact the POC in your state first:

IL

- Nolan Reicha (CEC)

MO

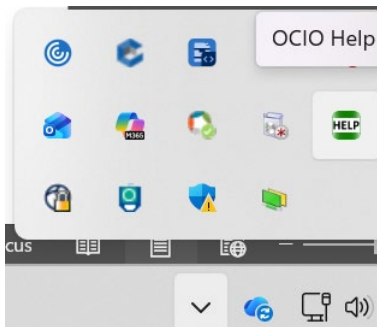
- Brandon Rivera Delgado (BTC)
- Katie Philbrick (GIS)
- James Slattery (CEC)

WY

- Sage Sheldon (GIS)
- Sacha Charna (Technical Support)

Other States/Centers and other inquiries

- Submit a CEC Helpdesk ticket



whityn.owen@usda.gov

Whityn Owen

Acting Director, Mission Delivery Optimization Division

Office of the Senior Deputy Associate Chief

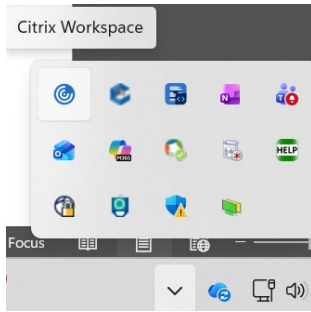
 **U.S. DEPARTMENT OF AGRICULTURE**

Natural Resources Conservation Service

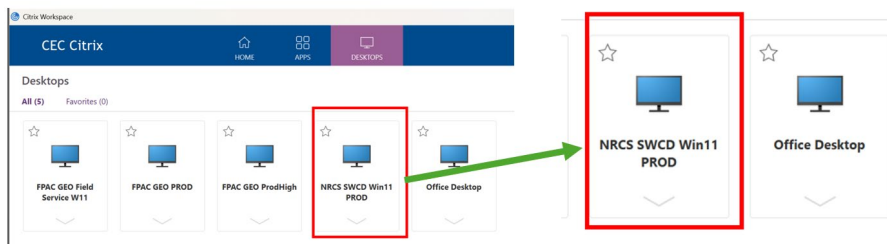
Follow these instructions to ensure all Virtual Desktop data storage locations are identified for backup.

1. **Connect** to the SWCD Virtual Desktop.

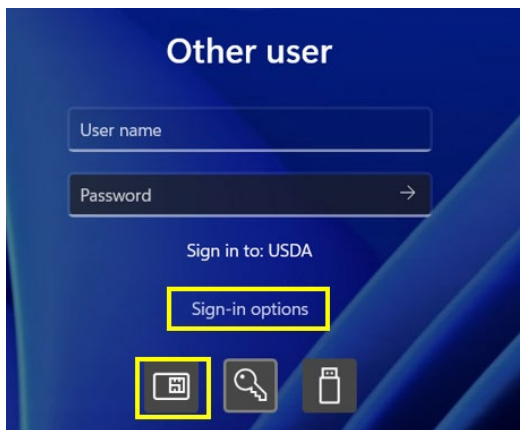
Open Citrix from the tray menu at the bottom right of your computer or else through your Programs list



Select the NRCS SWCD Win11 Prod (note your options may vary. I have multiple virtual desktops available but most SWCD staff will just have one)

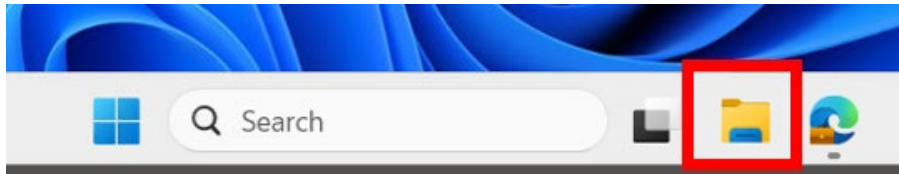


Click **Sign-in Options** >> wait until the Lincpass/PIV card option is available and login



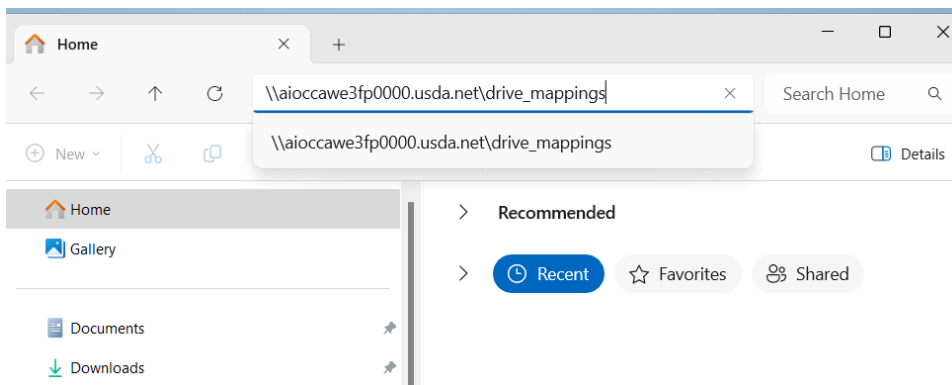
When the Virtual Desktop opens...

2. **Open the File Explorer** (yellow folder icon at the bottom of the tray):

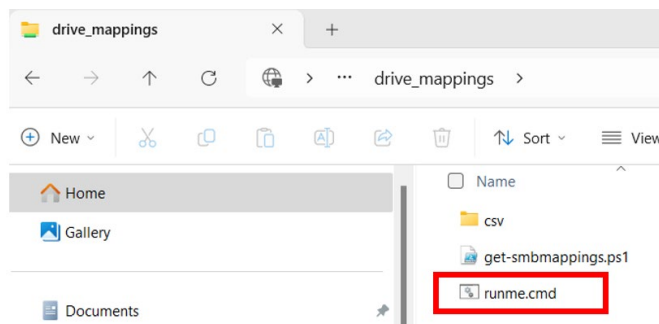


3. **Copy/paste** the following path into the File Explorer address bar:
\\aiocawe3fp0000.usda.net\drive_mappings

!! If you cannot paste from these instructions directly into the Virtual Desktop, you must type it in manually exactly as it appears above. !! If you do not have access or receive an error message, PLEASE triple-check for typos before contacting support. Everyone should have access.



4. You will see a “runme.cmd” file listed.
Double-click **runme.cmd**



- The Windows command window will open and the script will run for a few seconds. You will be prompted to “Press any key to continue...” **Press any key** to dismiss the command window.

```
C:\Windows\system32\cmd.exe
'\\aiocawe3fp0000.usda.net\drive_mappings'
CMD.EXE was started with the above path as the current directory.
UNC paths are not supported. Defaulting to Windows directory.

C:\Windows>powershell -File \\aiocawe3fp0000.usda.net\drive_mappings\get-smbmappings.ps1

Status Local Path Remote Path
-----
OK      F:      \\USDA\NRCS\Data\ORP02
OK      S:      \\USDA\NRCS\Shared\ORP02
OK      Z:      \\USDA.NET\NRCS\SHARED\ORP02\NRCS
OK      Z:      \\aiorpo23fp1\Data\geodata

C:\Windows>pause
Press any key to continue . . .
```

Sign out of the Virtual Desktop Start Menu (bottom to the left of Search) >> Sign Out

