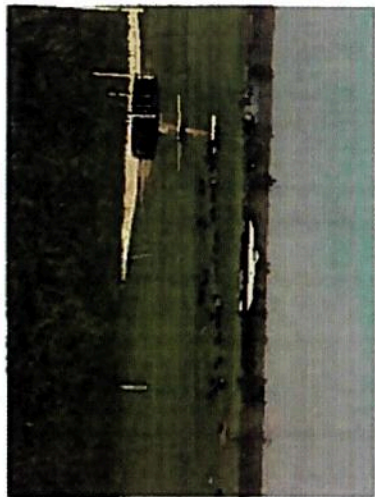


**USING ADAPTIVE  
GRAZING  
MANAGEMENT TO  
IMPROVE SOIL HEALTH  
FIELD WORKSHOP FOR  
PRODUCERS**



**Thursday  
September 28, 2017**

**Mike Coale Farm**  
9691 N. Farm Road 9  
Ash Grove, MO 65604

School organized and sponsored by:



**Maximum Registration is  
100 People**

Registration fee of \$30.00 per person includes lunch and break refreshments.

Registration is based on first come - first serve basis, upon receipt of the registration fee.

If the class is full, registration fee will be returned.

**NO CREDIT CARDS ACCEPTED**

**REGISTRATION FORMS AND PAYMENT MUST BE RECEIVED NO LATER THAN**

**SEPTEMBER 25, 2017.  
NO REFUNDS AFTER  
SEPTEMBER 25, 2017.**

Any questions, contact:  
Greene County NRCS/SWCD  
688 S. State Hwy B, Suite 200  
Springfield, MO 65802  
417-831-5246, ext.3  
email: [eric.morris@swcd.mo.gov](mailto:eric.morris@swcd.mo.gov)

Directions:

From Ash Grove, go north on "V" Highway for 4 miles, turn left (west) on Farm Road 36 travel for 1 and 1/4 miles to the corner of Farm Road 36 and Farm Road 9.

Look for "Field Day" signs

USDA is an equal opportunity provider, employer, and lender.

(Cut off and return this portion with payment) -----  
Registration Form  
**USING ADAPTIVE GRAZING MANAGEMENT TO IMPROVE SOIL HEALTH FIELD WORKSHOP FOR PRODUCERS**  
**REGISTRATION AND PAYMENT MUST BE RECEIVED NO LATER THAN SEPTEMBER 25, 2017**

Name \_\_\_\_\_ Total No. \_\_\_\_\_ (\$30.00 ea.)  
Address \_\_\_\_\_  
City \_\_\_\_\_ State \_\_\_\_\_ Zip \_\_\_\_\_ County \_\_\_\_\_  
Telephone (\_\_\_\_) \_\_\_\_\_ - \_\_\_\_\_ Email: \_\_\_\_\_

Please enclose check for full amount payable to: "Greene County SWCD"  
Return check with registration form to:  
Greene County Soil and Water Conservation District  
688 S. State Hwy B, Suite 200  
Springfield, MO 65802

**NO CREDIT CARDS ACCEPTED**

NO REGISTRATION FEES WILL BE REFUNDED AFTER SEPTEMBER 25, 2017

## Workshop Agenda

**9:00 Welcome and Introductions**

Diana Sheridan

**9:15 Overview of Host Farm**

Mike Coale

**9:30 Soil Health Demonstrations**

Rainfall Simulator

Drexel Atkisson

Soil Health Demonstrations

Doug Peterson

**11:00 Haney Soil Health Test**

Drexel Atkisson/ Doug Peterson

**11:30 LUNCH**

**12:15 Concurrent Sessions**

- Break group into 4 subgroups
- Rotate every 40 minutes

**Station I – Pasture/Forest Soil Ecosystems**

Drexel Atkisson

Hands-on demonstration/discussion on soil health factors in pasture vs forestland.

**Station II – Pasture Allocation Exercise**

Doug Peterson

Hands-on demonstration/discussion on calculating/estimating how much forage is available for the livestock, what residual should be left and how this affects soil health.

**Station III – The Grass Plant**

Mark Skinner

How the plant grows and responds to grazing. Growing points, root system. How plant canopy affects soil temperature.

**Station IV – Soil Infiltration Exercise**

Luke Skinner

Hands-on exercise on water infiltration under various grassland management scenarios.

**3:30 OPTIONAL PASTURE WALK**

Mike Coale Farm (Host Farm)

For those interested in sticking around, we will walk Mike's paddock system to see plant diversity, fencing system and watering system.



### Speakers

Mike Coale, Greene County Producer, Ash Grove, MO, Host farm.

Luke Skinner, Soil Health Specialist, Luke Skinner, Soil Health Specialist, NRCS Area 1, St. Joseph, MO. Luke has worked for NRCS for nearly 10 years. His previous duties were Soil Conservationist and Area Forester in Northwest Missouri working with and learning from pasture, crop, and forest landowners. Luke's degree from MU in Forest Resource Management first introduced him to the ideas of succession in natural systems. Since working for NRCS, he and his family have started a contract cattle grazing operation on 250 acres of owned and rented land. Designing, installing, and utilizing 4 separate grazing systems consisting of more than 40 permanent and temporary paddocks utilizing rural, spring, and pond water sources distributed by gravity, grid and solar power to portable and permanent water tanks in paddocks with permanent and temporary fencing for grazing both perennial and annual forages.

Drexel Atkisson was raised on a beef farm in Dade County, Missouri where he and his family continue to operate a beef operation. After receiving a degree in Agronomy, Drexel began work with the Natural Resources Conservation Service in 1992. In 2010 a Soil Health workshop sparked a new passion that has grown ever since. Drexel began to work with producers to change the way they operated their land. Believing that we must produce food and fiber with less inputs in a more sustainable way, it has become his mission to help others adopt the key principles of soil health. In May of 2017 Drexel accepted a new position with NRCS as Area Soil Health Specialist. This position has allowed him to pursue his passion to improve soil health in Southwest Missouri.

Mark Green, Lead Resource Conservationist, NRCS, Greene/Webster/Polk/Dallas Counties, Springfield, MO. Mark was raised on a ranch in the mountains of Colorado. He received his B.S. in Agronomy from Southwest Missouri State University. Mark has worked with grazing management for the past 35 years with NRCS. During that time he has worked as Soil Conservationist, Area Resource

Conservationist, District Conservationist and Lead Resource Conservationist for SCS/NRCS. Prior to working for NRCS Mark worked for Haubien Farms at Lockwood, Missouri. Other jobs included Beechwood Ranch, Joplin, MO; Corder Ranch, Avilla, MO and Limon, CO; Deer Creek Valley Ranch and Hidden Valley Ranch, Pine, CO. Currently Mark serves as an instructor and regional coordinator for SW Missouri Regional Management-Intensive Grazing Schools. He is a member of American Forage and Grassland Council and a Board Member for Missouri Forage and Grassland Council.

Doug Peterson, Regional Soil Health Specialist, Iowa/Missouri, NRCS National Soil Health Division, Des Moines, IA. Doug Peterson has been an NRCS employee over 28 years. He started his career as a Soil Scientist and has been District Conservationist in both a grassland based county in south Missouri and a large cropland county in north Missouri. Doug has also served as a State Grassland Conservationist in Missouri. Currently he is Regional Soil Health Specialist teaching NRCS staff and producers around the mid-west about soil health, how it impacts virtually all natural resource processes, and what type of management it will take to effectively improve our soils health and productivity. He attended college at Missouri Western State University receiving a B.S. degree in Agriculture in 1986, with an emphasis in Economics and Agronomy. Doug grew up on a crop/livestock farm in north Missouri. Today he continues to operate a 350 head cow/calf and outcrop grazing operation with his father, Steve. They utilize Management-intensive Grazing and Holistic High Density Grazing to improve soil health, eliminate the need for most purchased fertilizer and limit hay needs to about one bale per cow per winter.

Diana Sheridan, District Conservationist, NRCS, Greene/Dallas/Polk/Webster Counties, Springfield, MO. Diana began her career with NRCS in 2003 as an intern in the Springfield Field Office. Prior to her career with NRCS she served as Executive Director of James River Basin Partnership and a Biology Lab Supervisor at MSU. She has been a Resource Conservationist in Barton and Lawrence Counties and District Conservationist in Barton and Jasper Counties and is currently serving Dallas, Greene, Polk and Webster Counties. Diana approaches agriculture conservation issues with a passion for water quality. She has a B.S. in Biology from Drury University and a M.S. in Zoology and Physiology from the University of Wyoming. She is interested in the academics and practical application of soil health knowledge. Previously, to improve water quality, conservation practices treated the edges of fields trapping soil and potential contaminants in buffers. With Soil Health practices water quality resource concerns are treated systematically on the entire operation. This is an exciting fundamental shift in the way we address water quality and ecosystem function in the context of agriculture production. As the field of soil health flourishes, so will the health of our farmland and the food we produce there. Diana is an active member of Soil and Water Conservation Society and is the 2017 Missouri Natural Resources Conference Program committee chairperson.