

Cost: \$180.00 per person (second person with paid full registration will be an additional \$70.00).

On line registration at:  
<http://muext.us/lcgs>  
or call 660-584-3658 to register by phone.

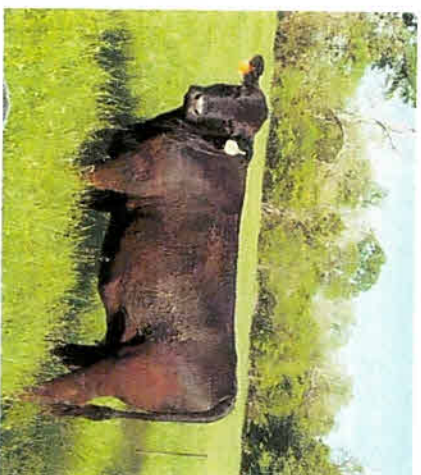


Please make checks out to:

Lafayette County Extension  
14 E 19th Street Suite 102  
Higginsville, MO 64037

If you need an accommodation to participate in this activity or event, please contact Katie Neuner at 660-584-3658 or [neunercm@missouri.edu](mailto:neunercm@missouri.edu) by May 15, 2025.

## Management Intensive Grazing Schools are presented By:



The U.S. Department of Agriculture (USDA)  
is An Equal Opportunity  
Provider and Employer

## Lafayette County Management Intensive Grazing School

### May 21-23, 2025

**FCS Financial  
Meeting Room  
4100 Hwy 13  
Higginsville MO  
64037**

## What is a Management Intensive Grazing System?

Management intensive grazing (also known as rotational grazing management) is a system where grazing animals are managed to increase resiliency of livestock, forage, and soil. Livestock graze in each pasture long enough to harvest the forage, but are removed before too much leaf area is consumed. A basic system may have 4 or 5 pastures with more management intensive systems having 8 to 10 pastures. With proper management the increased resiliency can lead to increased profitability for producers.

## Why should I attend this school?

The single most important management factor in determining the profitability of a livestock operation is keeping feed cost low. So why buy it when you can grow high quality feed yourself through a management intensive grazing (MIG) system?

Cost control, not the amount of production, separates profitable from unprofitable operations. Through a MIG system you can keep your cost low and in most cases production will increase, all while helping to conserve natural resources.

In addition to profits to your pocket book and the environment you may be eligible to receive costs share to help establish your MIG system. Check with your local SWCD or NRCS office for further information on assistance.

## The Northwest Missouri Grazing school will feature information on these topics:

- Inventorying Farm Resources
  - Soils and Topology
- Plant Growth and Species
  - Grazing Basics
- Livestock Water
- Extending the Grazing Season
  - Fencing
- Forage Quality Discussion
  - Economics of Grazing
- Layout and Design of a MIG System
- Meeting Nutritional needs of Livestock with Pasture
  - Pasture Fertility
  - Forage Estimates
  - Grazing Heights
- Matching Livestock with Forage Resources
- Farm Visits (onsite functioning MIG systems)



**This event has outdoor activities. Please wear appropriate footwear and dress for the weather. We will conduct farm visits rain or shine.**

**May 21-23, 2025**

**9:00 am start time ending**

**approximately at 4:00 pm on all 3**

**days**

**FEE: \$180 per attendee, \$70 for additional member of same farming operation**

**operation**

A receipt for the cost of the school, an agenda, and directions to the school location will be emailed or sent by USPS upon registration.

If you have questions, please contact Katie Neuner with MU Extension. You can reach Katie Neuner at 660-584-3658 or

neunerkm@missouri.edu

The registration fee covers the costs of the seminars including meals, speaker fees, refreshments, on-farm tour equipment, fence and water system demonstrations and the following references:

- Missouri Grazing Manual
- Forages and Weeds of Pastures
- Grazing stick

You also receive these free publications:

- Electric Fencing for Serious Grazers
- Water Systems for Serious Grazers
- Soil and Pasture Health Guide for MO
- Extending Grazing and Reducing Stored Feed Needs.