

Conducting a Regional Grazing School

Gene Schmitz

MU Extension Field Specialist in Livestock

1012A Thompson Blvd.

Sedalia, MO 65301

660-827-0591

schmitze@missouri.edu



Purposes

1. **Educate** producers and agency personnel in the art and science of grazing management.
2. **Transfer new technology** in grassland management to producers and agency personnel.
3. Qualify producers for the state DSP3 cost-share program.



Brief History

1. Original grazing schools at FSRC
2. Expanded to regional schools ~1991
3. 19,315 people in state program office grazing school database



Cost-Share Information

- DSP 3.1 (Water development) = \$6,368,598
- DSP 3.2 (Water distribution) = \$19,165,539
- DSP 3.3 (Fence) = \$11,515,832
- DSP 3.4 (Lime) = \$3,511,252
- DSP 3.5 (Seed) = \$557,728
- DSP 2 (Perm. veg. cover enhance.) = \$10,011,594
- Old DSP prior to a per acre practice = \$12,750,951
- Total Cost Share = \$63,881,496



Who is involved?



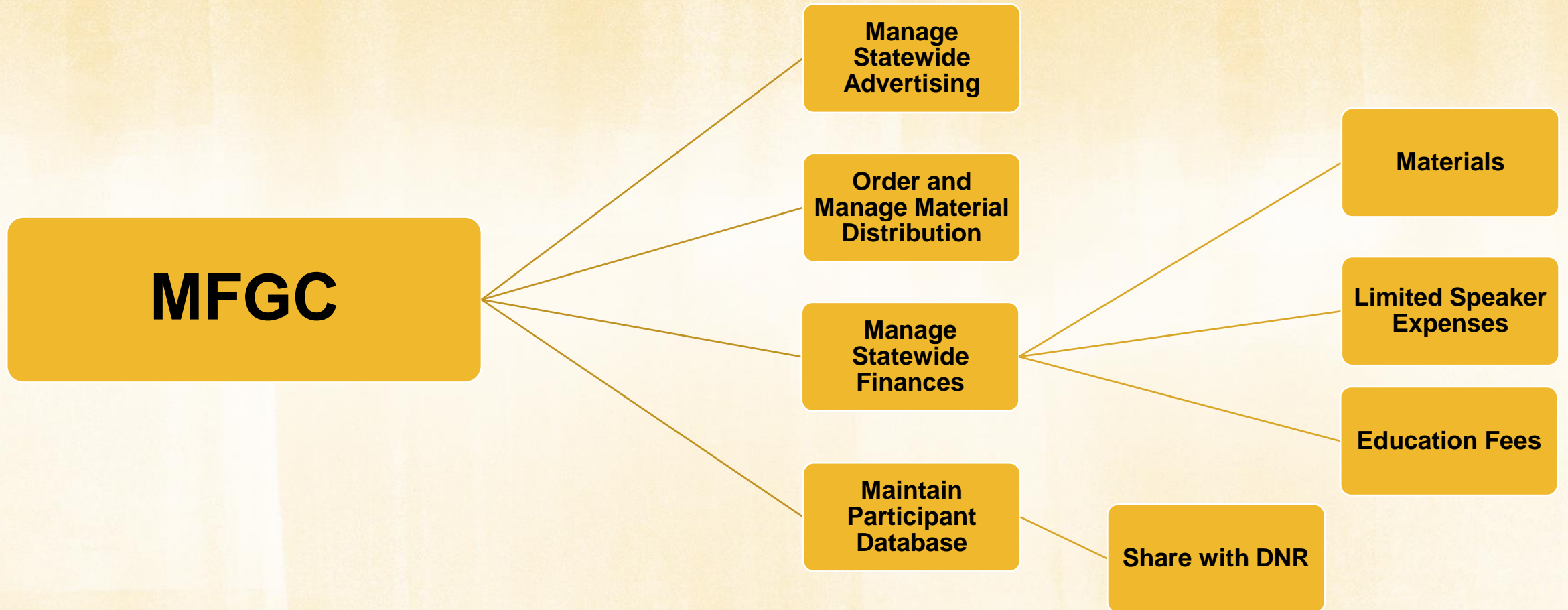
MFGC

MU Extension

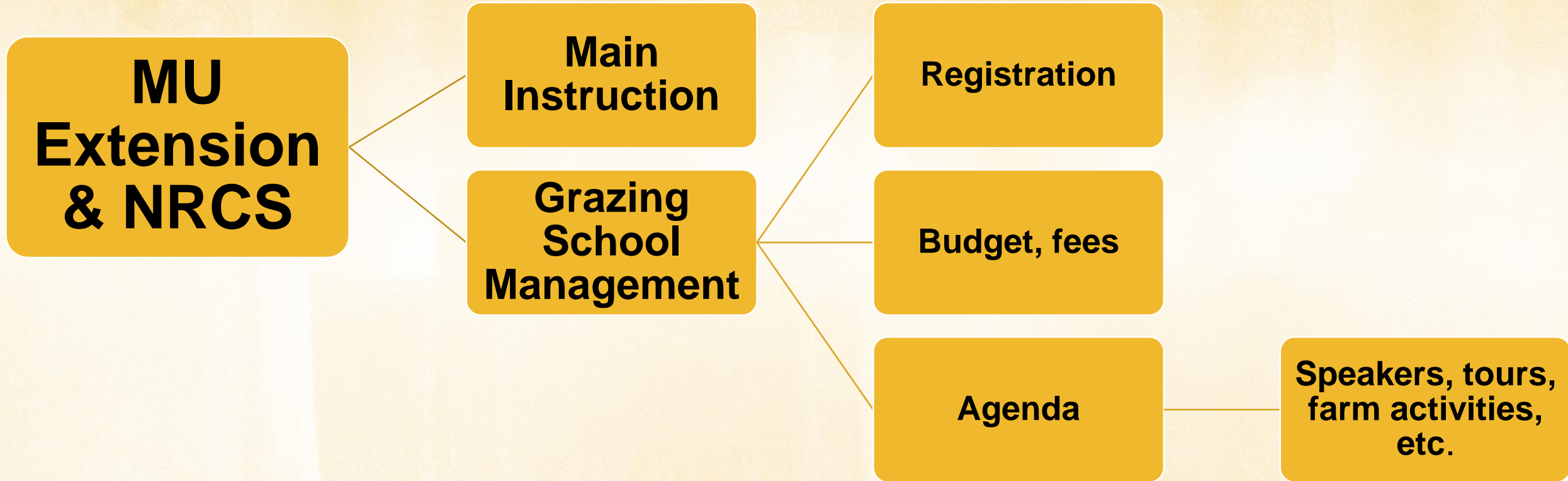
NRCS

SWCD's

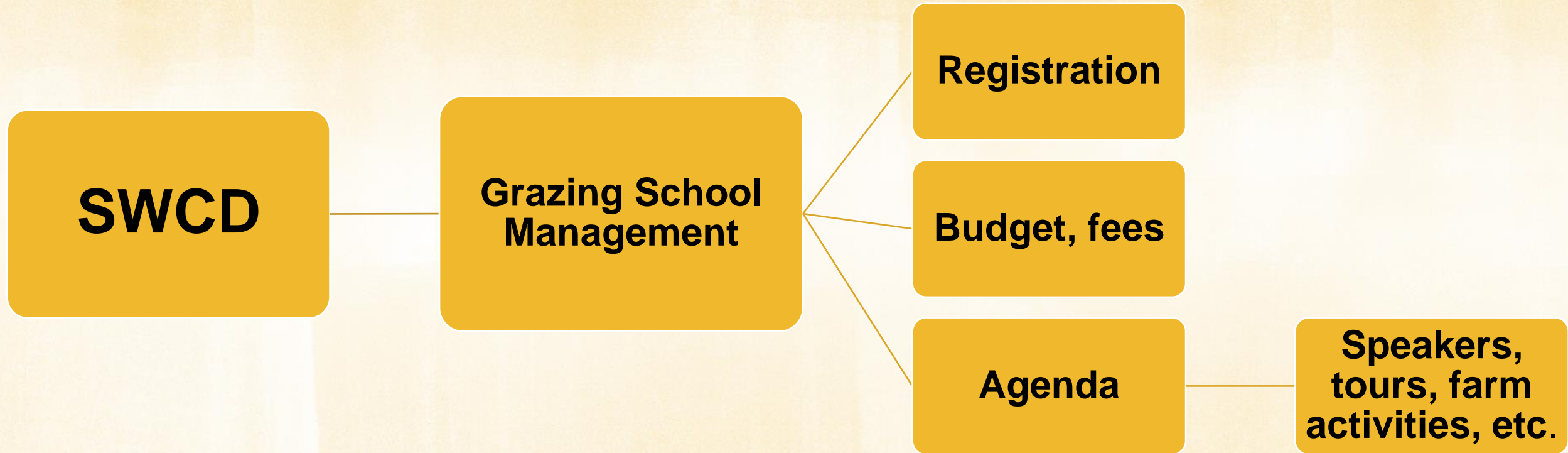
Roles



Roles

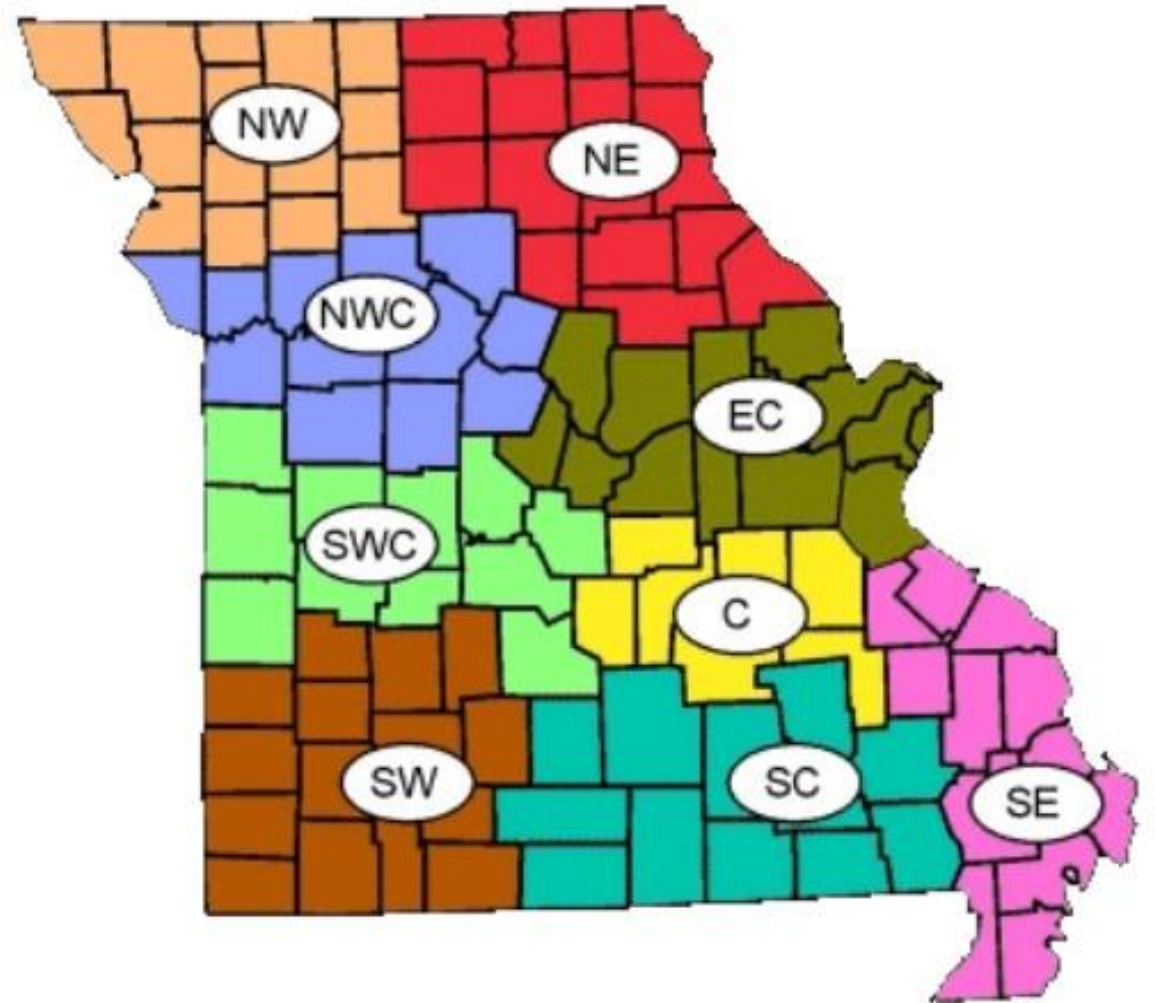


Roles



Grazing School Regions

- 9 Statewide
- MU Extension & NRCS Regional Coordinators for each region



Roles

Regional Coordinators

```
graph LR; A[Regional Coordinators] --- B[MU Extension & NRCS]; A --- C[Liaison between MFGC and local schools]; A --- D[Coordinate schools within regions]; A --- E[Order and inventory materials for region]; A --- F[Evaluations, summary reports and billing to MFGC];
```

MU Extension & NRCS

Liaison between MFGC and local schools

Coordinate schools within regions

Order and inventory materials for region

Evaluations, summary reports and billing to MFGC

Conducting the Grazing School

- 3-Day school
- Flexible Agendas (See HO's)
- April 1 – October 31
- Speakers
 - Must attend statewide training for certification
- Farm tours
 - 2 operations if possible
- Fees
 - Venue, meals, refreshments
 - Materials, education fee
- Final reports: regional coordinator → MFGC → DNR



Grazing School Materials

Required

- Missouri Grazing Manual
- A Guide to the Common Forages and Weeds of Pastures
- Grazing Stick
- \$44 for materials

Optional

- Electric Fencing for Serious Graziers
- Watering Systems for Serious Graziers
- Missouri Soil & Pasture Health Guide
- Others

Grazing School Topics

DO NOT OVERSCHEDULE

- Intro to MIG
- Resource Evaluation
- Plant Growth
- Forage Quality
- Livestock Nutrition on Pasture
- Soil Fertility and Landscape Ecology
- Layout & Design
- Fence and Water Technology
- Economics
- **Q&A / Discussion**

Optional topics – NRCS/SWCD Practices & Policies, Wildlife, Pasture Weed Control, Alternative Forages, Stockpiled Grazing

Grazing School On-Farm Tours

- Make or break school
- Experienced graziers who can communicate
 - May include school participants
- Provide **guidance & reinforce** topics covered during classroom lessons:
 - Forage productivity
 - Grazing heights / rest periods
 - Animal behavior / performance
 - Infrastructure



Grazing School On-Farm Tours

- Respect Tour Hosts Time
 - Pre-tour presentation?
- Length of Stay
- Travel Distance
- Time of Day
- Participant Comfort



Grazing School On-Farm Lessons

Include Participant Activities as Appropriate

- Pasture Condition
 - JS-AGRON-24
- Forage Yield Estimates
 - Grazing Sticks
 - Rising Plate Meters
 - Grazing Wedge
- Forage and Weed ID
- Reinforce Main Topics
 - Forage availability, grazing residual, animal demand, etc.
 - Forage allocation exercise?
- Electric Fencing
- Watering Systems
- Rainfall Simulator?

Grazing School Participant Follow-Up

- Historically have not done a good job with this
- Grazing system design - ok
- Grazing system operation year 1 & 2??
- Opportunity for advanced training / grazing schools



Regional Grazing Schools



Gene Schmitz
660-827-0591
schmitze@missouri.edu



Regional MiG Grazing Schools
Update on Program Policies
January 3, 2017

A general overview of the school policies, including school dates, materials, and logistics can be found MFGC/GLCI website: <http://mofgc.org/policies.pdf> (Some information is out of date, but the basic operational information is current. Below is copied from the website):

PROGRAM POLICIES:

The Missouri Regional Grazing Schools are educational programs taught by the Natural Resource Conservation Service (NRCS) and University of Missouri Extension (MU). The schools serve three purposes:

- 1) Educate producers and agency personnel in the art and science of grazing management;*
- 2) Transfer new technology in grassland management to producers and agency personnel;*
- 3) Qualify producers for the state DSP3 cost-share program.*

COORDINATORS, INSTRUCTORS, AND GRAZING REGIONS:

The schools are taught in nine "grazing school regions." These regions do not conform to institutional boundaries of either NRCS or MU. Rather, they define regions according to similar soil, topography, and land use; boundaries for regions were established more than ten years ago by NRCS and MU with approval from administration. Some regional boundaries have been adjusted since that time. Within each region are two co-coordinators--one from NRCS and another from UE.

A map of these regions, along with the names of regional coordinators is posted on the website for the Missouri Forage & Grassland Council/Grazing Land Conservation Initiative (MFGC/GLCI).

CURRICULUM:

All schools must address the following core subject matter in some form or another:

- Introduction to Management-intensive grazing*
- Resource evaluation*
- Plant growth*
- Forage quality*
- Livestock nutrition on pasture*
- Soil fertility and landscape ecology*
- Layout and design*
- Fence and water technology*
- Economics*
- Tying it all together*

Other subject matter may be added as deemed appropriate and as time allows.

SCHOOL DATES:

Schools are taught during the grazing season only. The grazing season runs from April 1 to October 31. They are scheduled in each of the nine regions under the leadership of the two co-coordinators. The two co-coordinators work together, along with instructors from NRCS and MU, to determine the number, the dates and the locations of schools in their region. They relay this information to MFGC/GLCI by February 14.

After information is relayed back to MFGC/GLCI it will be put on a calendar on the MFGC/GLCI website. MFGC/GLCI provides dates, places, and local contact persons for each school. This information will be posted on the MFGC/GLCI website in mid-March. In addition, the information will be published in various newsletters, including Missouri Grasslands.

INSTRUCTOR MATERIALS:

Instructors in each region are provided with multimedia materials.

PRODUCER MATERIALS:

Producer materials include manuals, grazing sticks, and other technical teaching tools. They are to be purchased from MFGC/GLCI, and the orders placed ONLY BY REGIONAL COORDINATORS. Materials are not to be ordered by instructors, secretaries, or other support personnel in the region; this will prevent duplicate orders and confusion of invoicing.

Materials can be ordered by the item. All orders are final, and regions that purchase materials are responsible for them. All orders must be turned in by February 14 to MFGC/GLCI.

Purchasing by Item:

- Missouri Grazing Manual- \$20.00
- A Guide to the Common Forages and Weeds of Pastures - \$14.00
- Grazing Stick- \$5.25 ~~\$10.00~~

The above materials will be picked up by coordinators from the MFGC/GLCI representative. During pickup, coordinators will sign for all materials and they are to receive written receipts or signatures from all instructors, secretaries, or other personnel in the regions who receive these items.

Additionally, copies of the NRCS publications Electric Fencing for Serious Graziers, Watering Systems for Serious Graziers, and Missouri Soil & Pasture Health Guide can be obtained through your local NRCS/SWCD offices. These are excellent resources and should be used as reference materials at grazing schools.

Below is more detailed information from 2016 Coordinators State Meeting:

Handling of materials:

- Coordinators keep records for their region's materials.
 - o Record of the materials picked up from MFGC/GLCI.
 - o Record and signatures from people in their region who receive these materials, making sure the materials are counted as they are distributed, and keeping track of these materials.

Invoicing:

- At the end of each school, the coordinators will email the MFGC/GLCI office with needed information for invoice for that school
 - o Who to bill for the material (SWCD, Local Extension Office, Etc.)
 - o How much to bill them for.
 - o How many to charge the Education Fee
- All bills for materials and educational Fee are to be sent from regional coordinators to the MFGC/GLCI office.
 - o Bills should not be sent via alternate routes, as these cause double billings, missing billings, and confusion among the coordinators who are attempting to keep track of bills.
- MFGC/GLCI will then send the invoice to the coordinator, who will in-turn send on to the SWCD or Extension paying the bill.

Participants List:

- The Final Participant list for that school will be sent from coordinators to the MFGC/GLCI office, after which the lists will be sent by MFGC/GLCI immediately to DNR;
- The reason for this routing is the same as for billing—it prevents duplication, incomplete and unofficial information, and a disagreement regarding who has attended the schools.
- Instructors List – A list of instructors, title, agency for each school must also be sent to MFGC/GLCI for records.

Educational Fee: \$50 fee -- Updated Policy:

- o The \$50 fee is to be applied on a per head basis of those that attended the grazing school, unless there are two people from the same farm who register together. They will only pay one \$50 fee.



MFGC/NatGLC GRAZING SCHOOL REPORT

Name of School	
Region	
County	
Invoice (Name & Address)	
Coordinator(s)	
Billing Email	
Dates of School	
Grazing Manuals Used	
Forage & Weed Manuals	
Grazing Sticks	
Educational Fees	

Checklist of items sent to MFGC for reporting -

Please mark off each item completed (click once to check the box)

- List of final participants with complete addresses who attended the entire grazing school
- Registrants attending together as one entity on list have been identified
- Full list of instructors with title and agency identified
- Agenda (either scan brochure or provide a typed copy)
- Evaluations compiled and entered on spreadsheet
- Submit to regional coordinators for forwarding to MFGC/NatGLC
- Summary of materials used

Regional Grazing School - Benton County			
August 24, 25, 26, 2021			
Baptist Church Fellowship Hall, 201 E. Lamine, Lincoln, MO			
7/30/21			
Min	Tuesday 8/24/2021		
	8:30	Doors open, coffee & donuts	
30	9:00	Welcome, Course Introductions <i>Get to know speakers and attendees</i>	Gene Schmitz
15	9:30	Introduction to MIG <i>History, goals, benefits, examples</i>	Gene Schmitz
30	9:45	Resource Planning <i>Inventory, efficiency indicators, management cycle</i>	Amie Breshears
15	10:15	Break and Travel to SWCD Barn	
90	10:30	Fencing and NWSG	Mark Kennedy & Instructors
45	12:00	Lunch	
60	12:45	Basic Soil Structure, Function and Fertility	Travis Harper
60	1:45	Grazier's Arithmetic	Mark Kennedy
15	2:45	Break	
60	3:00	Basic Animal Nutrition	Gene Schmitz
	4:00	Adjourn	
Min	Wednesday 8/25/2021		
	8:30	Registration, coffee & donuts	
30	9:00	Farm Intro and Travel to Farm	Gene Schmitz
150	9:30	Operator information Participant activities: soil testing, forage stand evaluation, forage identification, forage availability measurements	Leland Burnett Travis Harper Gene Schmitz Mark Kennedy
45	12:00	Lunch	
60	12:45	Basic Plant Growth, Forage Quality, & Persistence	Travis Harper
15	1:45	Break	
90	2:00	Water Systems	Mark Kennedy
60	3:30	Matching Animals and Forages	Gene Schmitz
	4:30	Adjourn	
Min	Thursday 8/26/2021		
	8:30	Registration	
30	9:00	Farm Intro and Travel to Farm	Gene Schmitz / Tina Dulaban
150	9:30	Operator information Participant activities: soil testing, forage stand evaluation, forage identification, forage availability measurements	Dwayne & Dillard Kreisler Travis Harper Gene Schmitz Mark Kennedy
45	12:00	Lunch	
60	12:45	Layout and Design	Mark Kennedy
60	1:45	Economics	Amie Breshears
30	2:45	Cost Share Opportunities	NRCS / SWCD
60	3:15	Participant System Layout, Wrap Up, Evaluations, Certificates	Instructors, local SWCD / NRCS
	4:15	Adjourn	

SOUTHEAST MISSOURI REGIONAL
GRAZING SCHOOL —
FALL 2021



AUG 31-SEPT 2,
2021

Desloge Methodist Church
Desloge, MO

Instructor Contact information

- > turnerjd80@gmail.com
- > hopkinsrm@missouri.edu
- > grahamkk@missouri.edu
- > heather.hegel@usda.gov
- > ohmesg@missouri.edu
- > mark.nussbaum@mo.usda.gov
- > rsettle@quailforever.org



"The U.S. Department of Agriculture (USDA) prohibits discrimination in all of its programs and activities on the basis of race, color, national origin, age, disability, and where applicable, sex (including gender identity and expression), marital status, familial status, parental status, religion, sexual orientation, political beliefs, genetic information, reprisal, or because all or part of an individual's income is derived from any public assistance program. (Not all prohibited bases apply to all programs.) Persons with disabilities who require alternative means for communication of program information (Braille, large print, audiotape, etc.) should contact USDA's TARGET Center at (202) 720-2600 (voice and TDD)."

Tuesday August 31, 2021

8:30-8:45	Welcome and IntroductionsHeather Hegel/Kendra Graham
8:45-9:30	Art & Science of GrazingJohn Turner
9:30-10:15	Evaluation of Farm ResourcesHeather Hegel
10:15-10:30	BREAK
10:30-11:45	Watering Systems..... Mark Nussbaum
11:45-12:30	Economics of Forage and LivestockRachel Hopkins
12:30-1:30	LUNCH
1:30-2:30	Matching Livestock Needs and Nutrition.....Kendra Graham
2:30-3:30	Extending the Grazing Season.....John Turner
3:30-4:30	Q&A Session.....All Instructors

Wednesday September 1, 2021

8:30-9:30	Forage Weed and Brush Control.....Anthony Ohmes
9:30-9:45	Break
9:45-10:30	Fencing Systems.....John Turner
10:30-11:30	Soil Fertility Management and Nutrient Cycling.....Anthony Ohmes
11:30-12:00	Q&A Session.....All Instructors
12:00-1:00	LUNCH
1:00-2:00	Forage Quality, Growth, and Species.....Anthony Ohmes
2:00-3:00	Grazer's Arithmetic.....John Turner
3:00-4:30	Q&A Session.....All Instructors

PLEASE PLACE CELL PHONES ON SILENT MODE - THANK YOU!

SOUTHEAST MISSOURI REGIONAL GRAZING SCHOOL — FALL 2021



AUG 31-SEPT 2, 2021

Desloge Methodist Church
Desloge, MO

Instructor Contact information

- > turnerjd80@gmail.com
- > hopkinsrm@missouri.edu
- > grahamkk@missouri.edu
- > heather.hegel@usda.gov
- > ohmesg@missouri.edu
- > mark.nussbaum@mo.usda.gov
- > rsettle@quailforever.org



"The U.S. Department of Agriculture (USDA) prohibits discrimination in all of its programs and activities on the basis of race, color, national origin, age, disability, and where applicable, sex (including gender identity and expression), marital status, familial status, parental status, religion, sexual orientation, political beliefs, genetic information, reprisal, or because all or part of an individual's income is derived from any public assistance program. (Not all prohibited bases apply to all programs.) Persons with disabilities who require alternative means for communication of program information (Braille, large print, audiotape, etc.) should contact USDA's TARGET Center at (202) 720-2600 (voice and TDD)."

Thursday September 2, 2021

8:30-9:30	Layout and Design	John Turner
9:30-10:00	BREAK	
10:00-10:45	Benefits of Grazing Natives.....	Rachel Settle
10:45-11:00	Q&A and Prep for Farm Visit	
11:00-12:00	LUNCH	
12:00-4:30	Farm Visit	
	Producer Viewpoint.....	Ben Davis
	Rainfall Simulator.....	Warren Cork
	Pasture Evaluations.....	Heather Hegel/Anthony Ohmes
	Grazier's Arithmetic.....	Mark Kennedy
	Q&A with Producer.....	Ben Davis/All Instructors

Northwest Missouri Grazing School
June 22-24 2021
AGENDA

Tuesday, June 22, 2021

- 8:00 Check-In / Welcome and Introductions Luke Skinner and Jim Humphrey
8:20 Art & Science of Management-Intensive Grazing Mark Green
9:00 Break
9:10 Forage Basics (Quality/Growth/Species) Andy Luke
10:00 Travel to **Jim and Betty Grace Farm**
-Grazing System Tour with Manager (50 min)
-In Field Forage Basics Wayne Flanary and Andy Luke (30 min) Break Out
-WS Grass and Grazing for Wildlife Conservation Jim Grace and Jeff P (30 min) Break Out

12:00 **LUNCH (MU Hundley-Whaley Research Center)**
12:45 Rainfall Simulator/Pastureland Soil Function Luke Skinner
1:30 Pasture Fertility Wayne Flanary
2:15 **Video: Soil Carbon Cowboys** Jim Humphrey
2:30 Evaluation of on Farm Resources John Turner
3:15 Break
3:30 Economics of Grazing Wesley Tucker
4:30 Adjourn

Wednesday, June 23, 2021

- 8:00 Meeting Nutritional Needs of Livestock with Pasture Jim Humphrey/Shawn D
9:00 Break
9:10 Grazer's Math (grazing stick and pastureevaluation sheet) Wesley Tucker
10:10 Livestock Water Availability and Distribution Rodney Saunders
11:30 **LUNCH (MU Hundley-Whaley Research Center)**
12:15 Livestock Fencing (Fence Building Demo) Mark Green (John T)
3:00 Break
3:15 Matching Livestock with Forage Resources (crude protein and plant ID) Jim Humphrey/Shawn D
4:00 Adjourn

*Option: HT Fencing "hands on" after hours

Thursday, June 24, 2021

- 8:00 Travel to **John and Kenneth Leuken Farm**
-Grazing System Tour with Manager (40 min)
-Water Distribution Demo Rodney Saunders (35 min) Break Out
-Pastureland Evaluation Luke Skinner and Mark Green (35 min) Break Out
-Grazing Stick and Record Keeping John Turner (35 min) Break Out

12:00 **LUNCH (MU Hundley-Whaley Research)**
1:00 Extending the Grazing Season John Turner
1:45 Break
2:00 System Design and Layout Mark Green
3:30 **Video:Sunshine and Rain** Luke Skinner
3:45 C/S Opportunities Jeremy Redden
4:00 Wrap Up Questions and Answers

*Farm visits will be held rain or shine

**Regional Grazing School Agenda
Linneus, MO
October 6-8, 2021**

Wednesday, October 6

1:00 - Welcome & Introductions	all instructors
1:30 - Art & Science of MiG	John Turner
2:00 - Inventory: Evaluating the Resources	Robert Conley
2:45 - Break	
3:15 - Basic Soil Structure, Function and Fertility	Valerie Tate

Thursday, October 7

9:00 - Basic Plant Growth, Forage Quality and Persistence	Valerie Tate
10:00 - Basic Animal Nutrition	Zac Erwin
11:00 - Fencing: classroom portion	John Turner
Noon - Lunch	
1:00 - Matching Forages and Animals: Animal Requirements	Zac Erwin
1:45 - Fencing: Field Portion	John Turner
3:45 - Break	
4:00 - Watering Systems	Robert Conley

Friday, October 8

8:00 – Economics	Joe Koenen
9:00 - Matching Forages and Animals: Yield Distribution	Valerie Tate
9:45 - Layout and Design	Robert Conley
10:45 - Grazer's Arithmetic	John Turner
Noon - Lunch	
1:00 - Leave for Farm Visit, New Boston	Tad and Kim Carnahan

GRAZING SCHOOL 2020 REGIONAL COORDINATORS

Northwest Region:

James Humphrey
University of MO Extension
411 Court Street
Savannah, MO 64485-0032
816.324.3147
humphreyjr@missouri.edu

Luke Skinner
NRCS
NCRS Area Office
3915 Oakland Ave. Ste. 103
St. Joseph, MO 64506
Luke.skinner@usda.gov
660.663.9381

Northeast Region:

Robert Conley
NRCS
210 E. Main
POB 158
Shelbyville, MO 63469
573.633.2211 x 3
robert.conley@usda.gov

Valerie Tate
University of MO Extension
POB 81
109 N. High St. Courthouse Annex
Linneus, MO 64653
660.895.5123
tatev@missouri.edu

Northwest Central Region:

Zach Harding
NRCS
1407 W. 32nd St.
Sedalia, MO 65301
660.826.3339 x 3
zach.harding@swcd.mo.gov

Gene Schmitz
University of MO Extension
1012 A Thompson Blvd.
Sedalia, MO 65301
660.827.0591
schmitze@missouri.edu

East Central Region:

Rusty Lee
University of MO Extension
310 Salisbury St. Ste. E
Montgomery City, MO 63361
573.564.3733
leerw@missouri.edu

Megan Rudroff
NRCS
1315 E. Main St.
Linn, MO 65051
573.897.3797 x 109
megan.rudroff@usda.gov

Southwest Central Region:

Johnetta Yaeger
100 S. Burke
Versailles, MO 65084
573.378.5822 x 104
johnetta.yeager@usda.gov

Travis Harper
University of MO Extension
120 E. Lincoln St.
Clinton, MO 64735
660.885.5556
harpertw@missouri.edu

Central Region:

Nathan Bilke
NRCS
1050 Hwy 72 E
Rolla, MO 65401
Nathan.bilke@usda.gov
660.582.7423

Gatlin Bunton
University of MO Extension
302 Water St. POB 190
Steelville, MO 65565
573.775.2135
buntong@missouri.edu

Southwest Region:

Wesley Tucker
University of MO Extension
451 S. Albany Ave.
Bolivar, MO 65613
417.326.4916
tuckerw@missouri.edu

Nathan Witt
NRCS
1900 S Business Hwy 71
Neosho, MO 64850
417.451.1007 x 3
nathan.witt@usda.gov

South Central Region:

Sarah Kenyon
University of MO Extension
1376 Bill Virdon Blvd. West
Plains, MO 65775
417.256.2391
kenyons@missouri.edu

Jamie Kurtz
NRCS
3210 Hoover Dr.
West Plains, MO 65775
417.256.7117 x 3
jamie.kurtz@usda.gov

Southeast Region:

Anthony Ohmes University
of MO Extension 684 W.
Jackson Trail Jackson,
MO64755 573.243.3581
ohmesg@umssystem.edu

Heather Hegel
NRCS
711 Pointe Basse Dr.
St. Genevieve, MO 63670
573.883.2703 x 3
heather.hegel@usda.gov