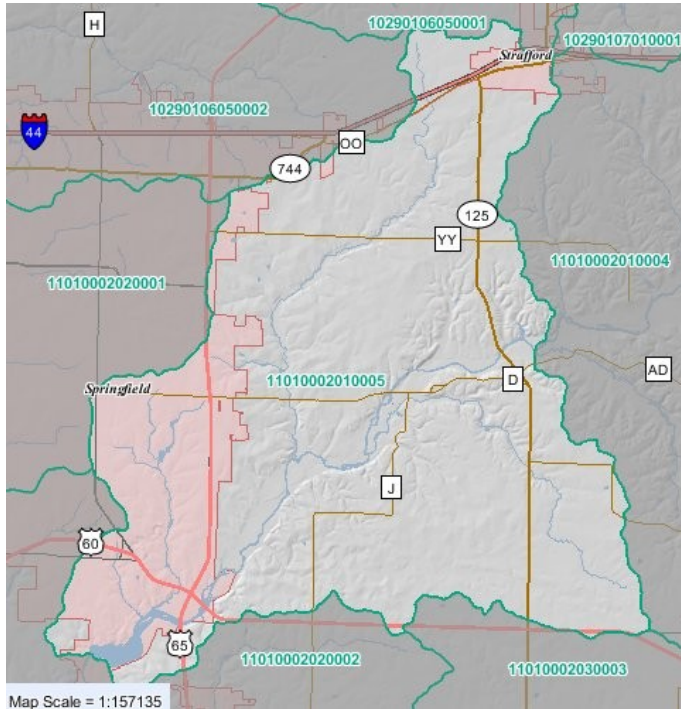


Greene Lines

Greene County Soil & Water Conservation District Newsletter

Summer 2013

Last Year for the Pearson Creek AgNPS SALT Project



July 1st marks the beginning of the last fiscal year of funding for the Pearson Creek SALT (Special Area Land Treatment) Project in the Pearson Creek Watershed. This project covers approximately 46,000 acres in Eastern Greene County and runs South of Stafford to Lake Springfield along and East of Highway 65. This area includes the James River, Turners Creek, Pearson Creek, Galloway Creek and Lake Springfield.

Aimed at improving water quality in the Pearson Creek Watershed, this project offers cost share opportunities and incentives to encouraging landowners to voluntarily apply conservation practices that improve or prevent pollution. Some of the practices offered through this grant include:

- **Legume Inter-seeding** – Inter-seed Legumes into your pastures.
- **Riparian Forrest Buffers and Stream Protection**- Pays incentives to exclude livestock from streams in the watershed.
- **Nutrient and Pest Management** - Designed to encourage producers to apply fertilizer or herbicides/pesticides according to a management plan. Pays a per acre incentive for record keeping and to follow the plan.
- **Abandoned Well Plugging**- Pays a flat rate incentive to plug abandoned wells. These are just a few of the many practices offered by this Project. If you live in the watershed and are interested in learning more give us a call. We would be happy to come out and visit about what this Project has to offer.

Inside this Issue:

- Management-Intensive Grazing Schools in SW Missouri
- District Rental Equipment Available
- New Board Member
- Japanese Beetle
- Well Camera
- Asher Creek Landowners

Meet Our Newest Board Member



TOM HUFF

Tom and his wife Tammy live on their 6th generation century farm in North East Greene County. Tom & his wife have two daughters, and 3 grand kids. The Huff farm encompasses 400 acres in Greene with another 80 acres in Webster County.

Tom was born and raised in Southwest Missouri. He went to school in Fair Grove, Received his BS in AG Business at Missouri State University. The Huff's run a cow /calf operation which keeps them very busy. Tom also is the current president for the Greene County Farm Bureau. If you see Tom, please thank him for volunteering his time to serve on the Greene County SWCD board.

Welcome Aboard Tom!!

www.swcd.mo.gov/greene

Greene County SWCD Board of Supervisors

Adrian Murray Farmer, Ash Grove	Chair
David Hall Farmer, Attorney	Vice-Chair
Joann Pipkin Farmer, Republic; Freelance writer	Treasurer
Pat Byers UMC Extension - Appointed Member	Secretary
Tom Huff Farmer, Fair Grove	Member

Mark your calendar

**Spring Forage Conference
for 2014
February 25, 2014**



Mark Green (NRCS– District Conservationist) Will Rhodes (SWCD– Technician) Eric Morris (SWCD Technician) Deneen Jenkins (SWCD– Manager) Bob Smith (ACES Program)

The Japanese Beetle in Greene County

Patrick Byers, Regional Horticulture Specialist
University of Missouri Extension – Greene County

When the Japanese beetle arrived in force in Greene County a few years back, gardeners and producers of horticultural crops were taken by surprise! This insect is possibly the most destructive pest of urban landscapes in Missouri, and a serious problem for fruit, vegetable, ornamental and turf farmers. The first Japanese beetles were accidentally introduced into the United State in 1916 from Japan, where the beetle is native and not a major pest. Unfortunately the insect found eastern North America to its liking – a favorable climate, large grassy areas for grub development, lots of desirable food plants, and no effective predators. Numbers built rapidly, and though the population levels have subsided in many areas, the Japanese beetle continues to expand its range. By 1972 the beetle was found in Missouri, though it took until the early 2000's for population levels to explode. Today the beetle is found across Missouri.

The attached photo illustrates the life stages of the Japanese beetle (photo source: <http://turf.uark.edu/turfhelp/archives>). Adult Japanese beetles are 7/16-inch long metallic green beetles with brownish wing covers. White tufts of hair project from under the wing covers. The larval stage is a white grub, found typically in grassy areas such as turf or pasture. Adults begin emerging from the ground in Greene County in early June, though this varies by year. In 2012, for example, the first Japanese beetle trap catch in my monitoring trap was May 4, 4 weeks earlier than in the previous 3 years. In 2013, though, the first trap catch was June 11, a week later than average. The adults begin to feed immediately, and numbers build to a peak in early to mid July. A beetle lives about 30-45 days, and numbers begin to decline after mid-July. The last trap catches are typically in the first or second week of August.

Japanese beetle adults feed on over 300 species of plants, devouring foliage, blossoms, and fruit. They often feed in groups, starting at the top of plants and working their way down. Feeding is concentrated on the tissue between the veins, leading to a skeletonized or lacy appearance. Adults release aggregating pheromones that encourage group feeding. The adults are mobile and can feed at distances from where they emerge. Favorite food plants include linden, elm, Japanese maple, Norway maple, chestnut, rose, althea, grape, raspberry, cherry, and unfortunately, many others. Japanese beetle larvae feed on the roots of grassy plants, and can damage turf in lawns, golf courses, and sports fields.

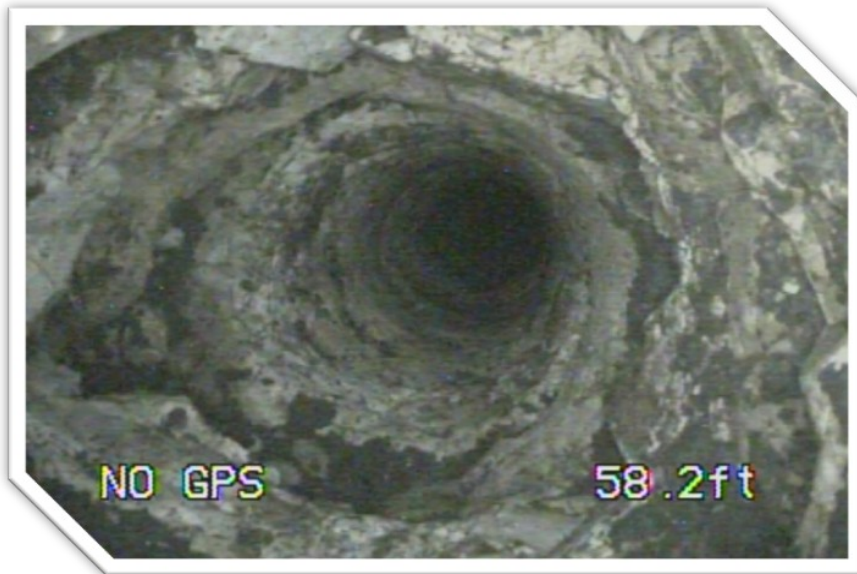
Mating and egg laying begins soon after adult beetles emerge in June. The female beetle burrows 2-3 inches into the soil and lays 40-60 eggs in her lifetime. Rainfall in midsummer and adequate soil moisture are needed to prevent desiccation and death of eggs and newly hatched grubs. The eggs quickly hatch, and the grubs spend the next 10 months in the soil, feeding on plant roots and quickly reaching full size by late August. The larvae move deeper into the soil during cold weather, returning to feeding when soil temperatures reach 50°F in the spring. After 4-6 weeks of feeding, the grubs form an earthen cell, pupate, and emerge as adults.



Visit: Greene County Extension website, <http://extension.missouri.edu/greene>.

Well Camera Helps in Planning

On May 22nd of this year, employees from NRCS and the Greene County Soil and Water District participated in Well Camera training in the Bois D'Arc area of Greene County. The Well camera purchased by NRCS for use in Southwest Missouri is available to be utilized on landowners who are interested in plugging Abandoned Wells.



Bore hole in limestone below the casing.

The camera is useful in measuring total depth of the well, static water level and length of casing. Voids or open areas can easily be detected and help to estimate the amount of material it will take to fill the well. Video and pictures like the one above can be taken at key points in the well if necessary. If you want to plug your well, State cost share funding is available at a flat rate payment of \$400 per well. All cost share needs to be allocated and approved prior to you beginning work. All Abandoned wells would be required to be plugged to Department of Natural Resources Standards and be registered by the state.

Call and ask For Will or Eric if interested, 831-5246, ext. 3



Attention Asher Creek Landowners

If you live in the Asher Creek Watershed from Willard, North to the Polk County Line and between Z Highway and Highway 123, you may be eligible to participate in a special Grant Project. The Asher Creek 319 Grant Project can provide funding for Grazing Systems, Stream Protection and Pasture Liming. This project does have a limited amount of funding so if you think this is something you could benefit from and would like to know more, give us a call at 417-831-5246 ext. 3

What is a Management Intensive Grazing System?

Also known as rotational grazing management. A system where grazing is managed for both the benefit of the livestock and forage. Livestock graze in each pasture long enough to harvest the forage, but removed before too much leaf area is consumed. A basic system may have four or five pastures, while a more management intensive system will have eight to ten pastures

How do you sign up?

Contact the person in charge of the school of your choice or contact your local NRCS or Soil & Water Conservation District. If you plan on attending, you need to hurry and get your name on the list because seating is limited and the schools fill up fast.

Topics Covered at the Grazing Schools:

- ◆ Inventorying Farm Resources
- ◆ Soils and Topography
- ◆ Plant Growth and Species
- ◆ Grazing Basics
- ◆ Livestock Water
- ◆ Extending the Grazing System
- ◆ Fencing
- ◆ Forage Quality Discussion
- ◆ Economics of Grazing
- ◆ Layout and Design of a MIG System
- ◆ Meeting Nutritional needs of Livestock with Pasture, Pasture Fertility Forage Estimates, Grazing Heights, Matching Livestock with forage Resources
- ◆ Farm visits

September 12,13,14 (daytime)

Location: Greenfield, MO

Contact: Cedar County SWCD
417-276-3388, ext.3

September 24,25,26 (daytime)

Location: Marshfield, MO

Contact: Mark Emerson
417-468-4176, ext.3

October 22,23,24 (daytime)

Location: Bois D'Arc, MO (NW of Springfield)

Contact: Greene County SWCD
417-831-5246, ext.3

Seeding Dates

Aug. 15 – Oct, 1

Jan. 1 – Feb. 15

(Dormant)

March 1 – May 15

April 1 – June 15

(warm season)

For more information contact us @

831-5246 Ext. 3

www.swcd.mo.gov/greene

**Greene County Soil and Water
Conservation District**

Equipment for Rent in Greene County

**John Deere & 2 Haybuster
No-Till Drills**

- \$10.00 per acre with a \$100.00 minimum
- 50 hp Tractor with hydraulic attachments required
- 10' wide with 7" row spacing
- 14" double disc openers
- 2" x 15 1/2" press wheels
- Legume, Warm Season Grass and Grain boxes
- 28 Bu capacity
- Solid filled tires



www.swcd.mo.gov/greene

**Other Equipment available includes: Spinning Jenny, fence splice crimpers and soil augers.
Call 831-5246, Ext. 3 for terms of usage.**

Equal Opportunity Employer and Provider.

**For information about
State and Federal
Cost Share Programs
please contact us at
417-831-5246 Ext. 3**

www.swcd.mo.gov/greene

**Greene County SWCD
688 S. State Hwy B, Suite 200
Springfield, MO 65802**

NON-PROFIT
ORGANIZATION
U S POSTAGE
PAID
Springfield MO
Permit 248

Or Current Resident