



Jeremiah W. (Jay) Nixon, Governor • Sara Parker Pauley, Director

DEPARTMENT OF NATURAL RESOURCES


www.dnr.mo.gov

MEMORANDUM

2014-002

DATE: July 8, 2013

TO: All Soil and Water Conservation Districts

FROM:  Colleen Meredith, Director
Soil and Water Conservation Program

SUBJECT: Conversion to HUC 12 tracking in MoSWIMS

In 2008, USGS released a nationwide GIS data set for watershed boundaries to provide consistency across all fifty states. Most state and federal agencies reporting on Hydrologic Unit Codes (HUC) are using 12 digit numbers to track sub-watershed efforts. The HUC 12 numbers are a result of the HUC 14 boundaries being realigned to better reflect watershed basins. To assist in coordinating watershed accomplishments with our partners, in FY14 the Soil and Water Conservation Program will begin using HUC 12 numbers rather than HUC 14 numbers.

During MoSWIMS rollover, FY14 contracts will have a conversion to HUC 12 code assigned as 99999999-9999 on the main contract entry screen. This code will also be associated to the farm/tract in the Maintain Farms/Tracts screen. Program office staff will associate HUC 12s to active AgNPS SALT projects that correspond with the HUC 14s previously associated to the projects. District reports affected by this change are the HUC Ledger Summary and HUC Practice Detail.

Districts will need to update the HUC codes associated to all FY14 contracts on the main contract entry screen and the Maintain Farms/Tracts screen. Pending contracts can be updated if they are at a status of pending contract submission. A change order must be completed for all other contracts to associate the correct HUC 12. **Change orders completed solely for the purpose of associating a HUC 12 do not require signatures. A reason note must be entered for the change order that states "Administrative change order for conversion to HUC 12 tracking. No signatures required."**

FY14 contract payments submitted for payment must have a valid HUC 12 associated before payment is issued. Once the HUC 12 numbers are associated to FY14 contracts, it is recommended that the district update the HUC numbers associated to all farms/tracts. The Maintain Farms/Tracts screen can be accessed by going to the Address Book, clicking on the pencil icon for a cooperator record, and clicking the Maintain Farms/Tracts button.

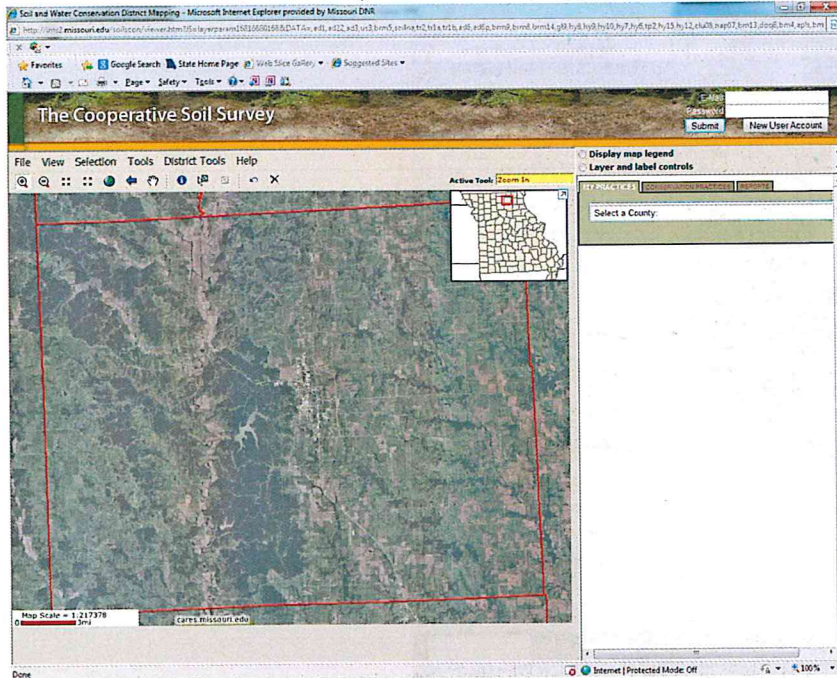
Directions to display the HUC 12 boundaries in CMT are attached.

If you have any questions on the information contained in this memorandum, please contact your district coordinator or the Soil and Water Conservation Program, P.O. Box 176, Jefferson City, MO 65102-0176, phone (573) 751-4932. Thank you.

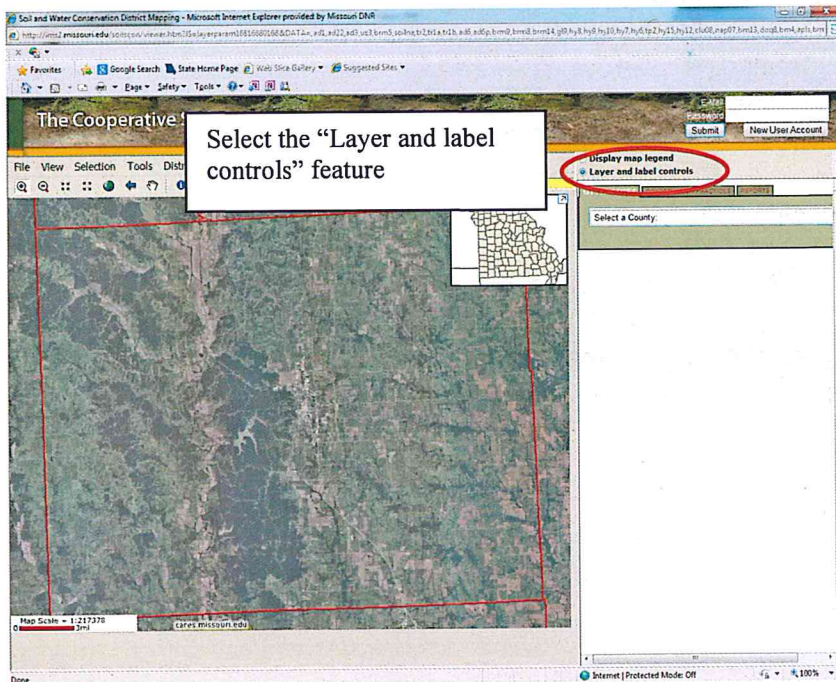
CM:abd

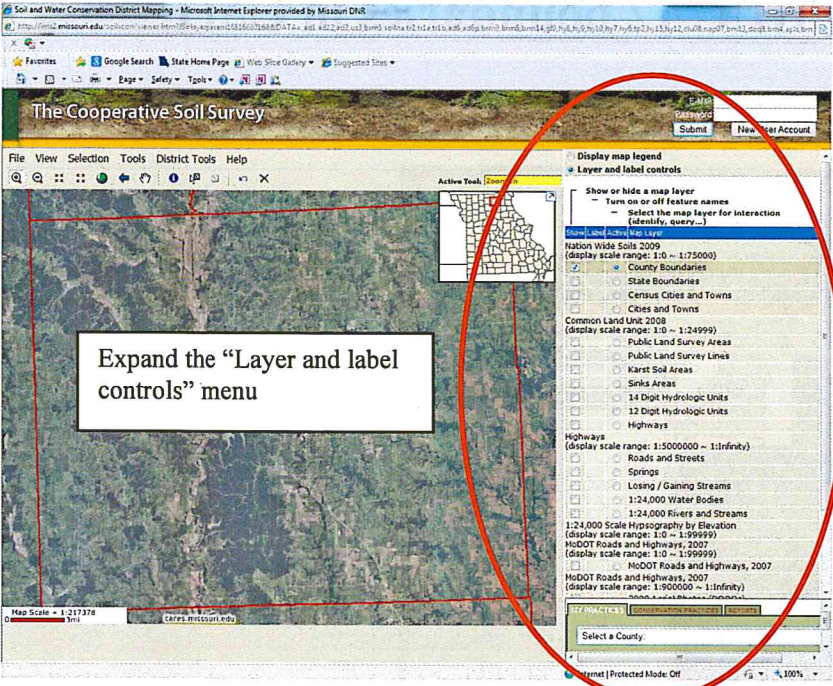
Attachment

Displaying HUC 12 boundaries in CMT

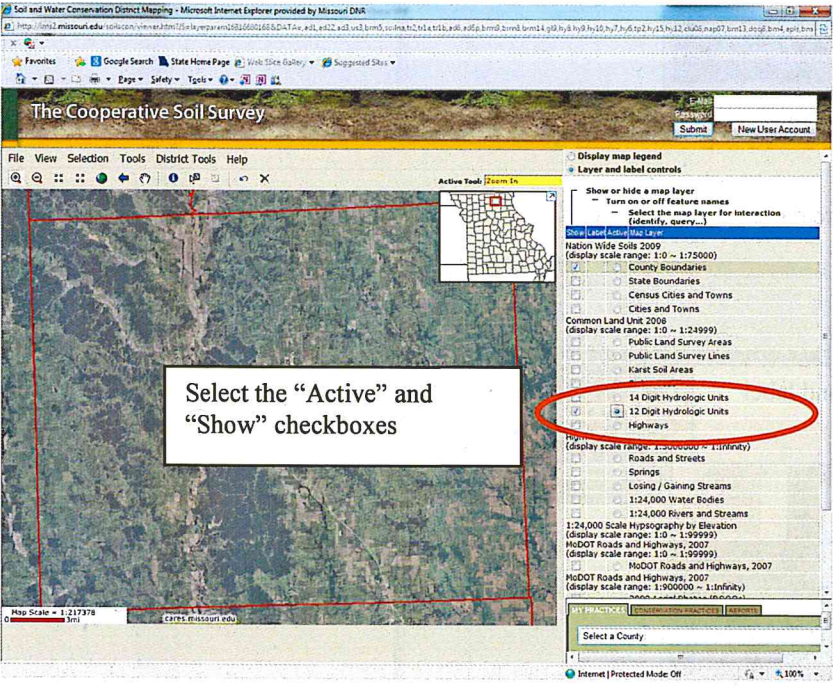


Select the "Layer and label controls" feature.





Expand the "Layer and label controls" menu



Select the "Active" and "Show" checkboxes

Soil and Water Conservation District Mapping - Microsoft Internet Explorer provided by Missouri DNR

http://www.missouri.edu/~soilwater/mapping/.../

The Cooperative Soil Survey

Submit New User Account

File View Selection Tools District Tools Help

Active Tool: **Zoom In**

Map Scale = 1:217378

Click "Refresh" and the HUC 12 boundaries will appear

- County Boundaries (display scale range: 1:0 - 1:75000)
- State Boundaries
- Census Cities and Towns
- Cities and Towns
- Common Land Unit 2008 (display scale range: 1:0 - 1:24999)
- Public Land Survey Areas
- Public Land Survey Lines
- Karst Soil Areas
- Sinks Areas
- 14 Digit Hydrologic Units
- 12 Digit Hydrologic Units
- Highways
- Highways (display scale range: 1:500000 - 1:Infinity)
- Roads and Streets
- Springs
- Losing / Gaining Streams
- 1:24,000 Water Bodies
- 1:24,000 Rivers and Streams
- 1:24,000 Scale Hydrography by Elevation (display scale range: 1:0 - 1:99999)
- MoDOT Roads and Highways, 2007
- MoDOT Roads and Highways, 2007 (display scale range: 1:500000 - 1:Infinity)
- 2006 Aerial Photos (DOQ's)
- 2007 Aerial Photos (NAIP)
- 2006 High Resolution Aerial Photos
- 2004 Aerial Photos (MOONRIS)
- 1994-2000 Aerial Photos (DOQ's)

REFRESH MAP

Select a County:

