

Wurdack Research Center FIELD DAY 2021

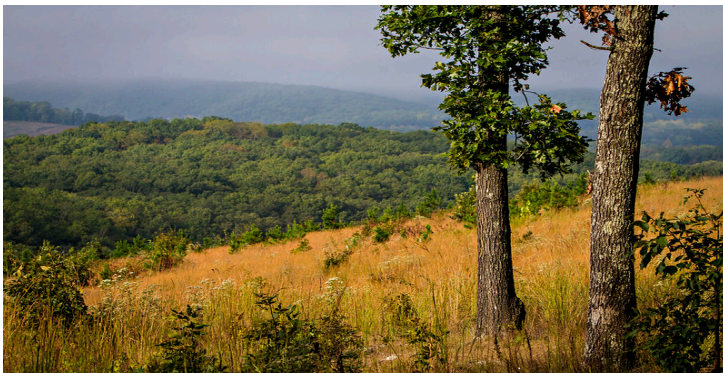
//////////////////// Friday, Oct. 8 /////////////// 8:30 a.m. - 1 p.m. //////////////////////



Wagon Tour: 9 a.m. - Noon /////////////// **Free Lunch @ Noon**

Building a Reproductive Farm

- using shade to enhance herd productivity
- body condition scoring as a planning tool
- grass & weeds in forages and late season broadleaf weed management
- synchronization with natural service
- timber sale methods and expectations
- the cow herd: changing our thinking from a depreciating asset to appreciating asset
- keeping animals on high quality forage/hay



JOIN US

Wurdack Research Center
164 Bales Road
Cook Station, MO 65449

From Salem: Hwy 19 north 15 miles to County 337 Road. Left 3 miles to farm entrance.

From Steelville: Hwy 8 west 3 miles to Hwy M, south to Cook Station. Follow signs.

From St. James: Hwy 68 south to Hwy YY, east to Cook Station. Follow signs.

From Rolla: Hwy 72 south to Hwy F. Follow Hwy F to Hwy 68. At the junction of Hwys F and 68, turn right. Follow Hwy 68 a short distance to Hwy YY. Follow YY to Hwy M. Turn right at the junction of Hwys YY and M. As you arrive in Cook Station, follow the Wurdack Farm sign by veering to the left of the old store. This is Bales Road. Follow Bales Road to the entrance.

FOR MORE INFORMATION

WalterD@missouri.edu // wurdack.missouri.edu



Wurdack Research Center
University of Missouri