

Grundy County Conservation Connection

January 2012 – March 2012

Volume 4 Issue 3

<http://www.swcd.mo.gov/grundy>

INSIDE THIS ISSUE

- 1 2012 ACAD set
- 2 World Water Monitoring Day
- 3 WWMD cont.
- 4 FSA News
- 4 Cost-Share Report
- 5 NRCS News
- 6 Equipment Notes
- 6 Give Us Your Opinion
- 7 Tech Notes
- 8 Kids Corner

9th Annual customer Appreciation Day Set

By HeatherK

The 9th Annual Customer Appreciation Day has been set for Friday, March 23rd.

The 2012 year will mark the 45th year of the Grundy County Soil & Water Conservation District. The Soil & Water District began under the direction of the Board of Supervisors. The 1967 Board was represented by (pic L-R) Dale Herring, Byron Grisamore, Clifford Goodrich, Estel Rhoades and Lelan Ryan.



Please see **ACAD** on page 2



ACAD from page 1

This event will be hosted at the First Baptist Church Basement, located at 2421 Oklahoma Avenue in Trenton. The amazing meal will kick off at 11:00am and around noon the Cooperator Of The Year Award will be presented.

Farmland Foods Environmental Team Hosts World Water Monitoring Day

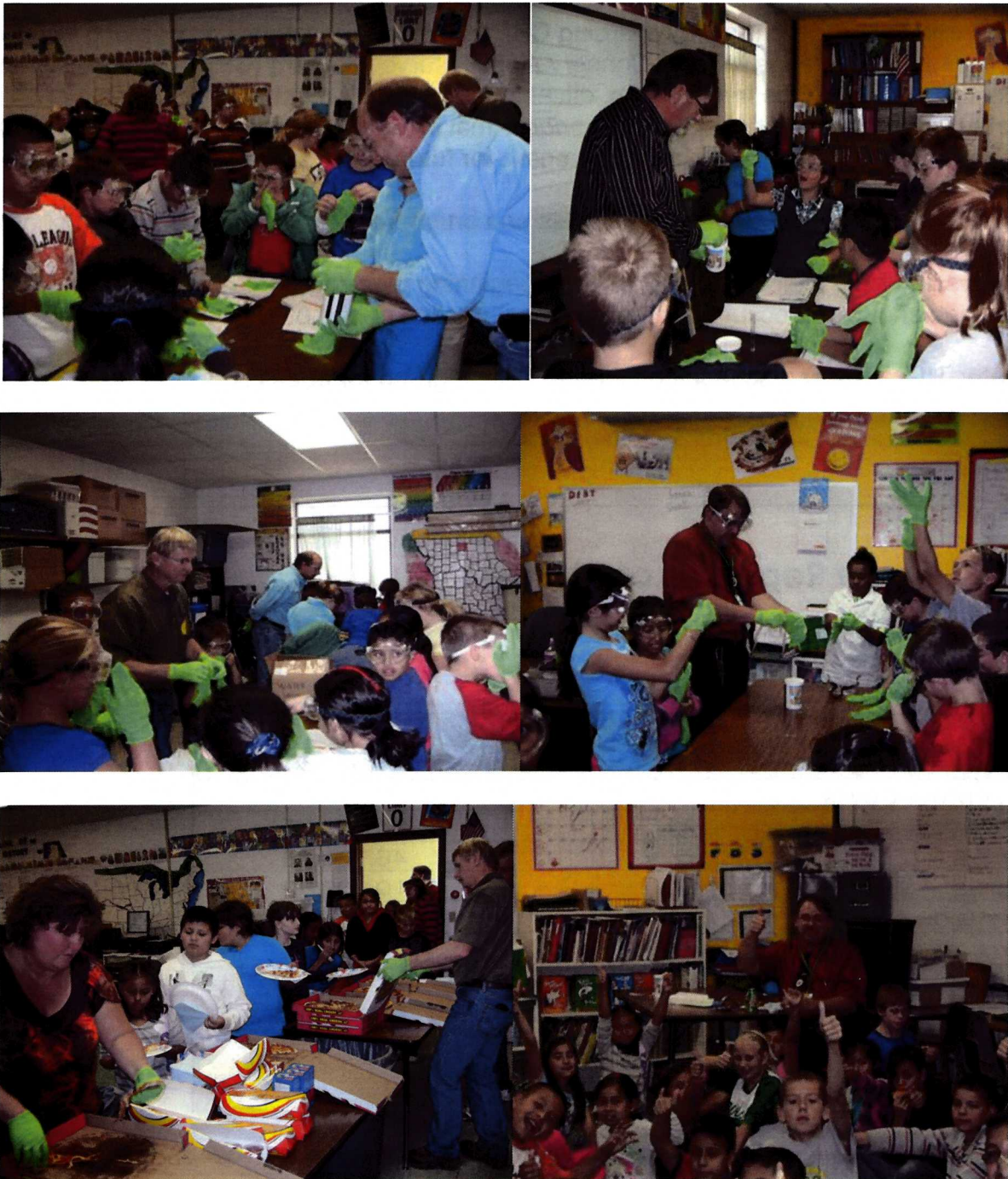
By HeatherK

The 5th Annual World Water Monitoring Day was held at a local school on Thursday, October 27th. This yearly event is hosted by the Farmland Foods Environmental Team in Milan, Mo. The Environmental Team demonstrates the testing of turbidity, dissolved oxygen, temperature and pH from local lake waters. After the demonstration is performed by the Environmental Team, the students are divided into teams so they can complete testing of turbidity, dissolved oxygen, temperature and pH. After students complete their water testing they had a YUMO luncheon of Champions...pizza, chips and soda.

Much thanks to the Farmland Foods Environmental Team, Mike Keith-Plant Environmental Manager, Ken Dunlap-Fresh Water Plant Supervisor, and Dave Taylor-Waste Water Plant Supervisor, for their efforts to provide environmental education, with hands on instruction/learning to the youth of the community.



WWMD from page 2



Photos courtesy of Mike Keith, Plant Environmental Manager at Farmland Foods – Milan.

FSA News

CRP ACREAGE ELIGIBILITY REQUIREMENTS FOR RE-ENROLLMENT

Requirements have changed regarding CRP enrollment. If you are considering enrolling or re-enrolling acreage into the Conservation Reserve Program (CRP) General Sign-up, the acreage **MUST** be free of trees, ditches and gullies. It must also be capable of being farmed with conventional equipment *prior* to making a bid into the program. Producers are encouraged to take time now to prepare for future CRP sign-ups.

Producers wanting to clear existing trees and brush from CRP contract acreage should request permission from their local COC *prior* to beginning the process. Spot treatment of CRP acreage should not occur during the primary nesting period of May 1 to July 15.

Note: There is *not* a scheduled General CRP Sign-up for at this time.

Cost-Share Report as of 11-14-11

By HeatherK

REGULAR COST-SHARE ALLOCATIONS/PRACTICES FY2011			
PRACTICE TYPE	# OF PRACTICES	\$'S OBLIGATED TO DATE	
VEGETATIVE COVER			
TERRACE SYSTEMS	22	\$	126,854.33
PONDS	5	\$	46,789.16
BASINS	2	\$	10,208.33
DIVERSION	1	\$	5,793.63
TOTAL \$'S OBLIGATED TO DATE		\$	189,645.45
	Report Obligated	\$	189,645.45
	MoSWIMS Allocation	\$	232,143.00
	Unobligated Funds	\$	42,497.55

NRCS News

Farm Bill Programs Sign-up Deadlines

The USDA NRCS has announced sign-up deadlines for the first round of fiscal year 2012 funding.

January 27, 2012 is the deadline to sign up for the Conservation Stewardship Program (CSP). The CSP program makes annual payments to selected producers for existing stewardship activities as well as additional enhancements. These annual payments are made over a 5 year contract life.

February 3, 2012 is the deadline for the 5 major conservation programs and initiatives. A brief overview of these is listed below.

Program and Initiative Overviews

Environmental Quality Incentives Program: EQIP provides financial and technical assistance to install and implement structural and management conservation practices on agricultural land.

Wildlife Habitat Incentives Program: WHIP provides financial and technical assistance on private agricultural land; nonindustrial private forest land and Indian land to assist eligible producers establish and manage fish and wildlife habitat.

On-Farm Energy Initiative: NRCS and producers develop Agricultural Energy Management Plans (AgEMP) or farm energy audits that assess energy consumption on an operation. NRCS then uses audit data to develop energy conservation recommendations. Each AgEMP has a landscape component that assesses equipment and farming processes and a farm headquarters component that assesses power usage and efficiencies in livestock buildings, grain handling operations, and similar facilities to support the farm operation.

Organic Initiative: NRCS helps certified organic growers and producers working to achieve organic certification install conservation practices for organic production. New for fiscal year 2012, applicants will be evaluated continuously during the ranking periods. Applications meeting or exceeding a threshold score may be approved for an EQIP contract before the end of the ranking period. Applications rating below the threshold score will be deferred to the next period. A new threshold score will be established at the beginning of each ranking period. This new scoring process allows organic producers to implement conservation practices in a timelier manner.

Seasonal High Tunnel Pilot Initiative: NRCS helps producers plan and implement the steel-framed, polyethylene-covered structures that extend growing seasons in an environmentally safe manner. High tunnel benefits include better plant and soil quality, fewer nutrients and pesticides in the environment, and better air quality due to fewer vehicles being needed to transport crops.

For more information contact the USDA NRCS Office in your local USDA Service Center.

Equipment Notes by Kevin Stover

Equipment	Deposit	Rate*	Out of County
John Deere 7430 Tractor	\$500	\$22/Hr.	\$25/Hr
John Deere 6430 Tractor	\$500	\$22.Hr.	\$25/Hr
Great Plains 12' No Till Drill	\$200	\$8/Acre	\$10/Acre
Rhino 15' Cutter/Shredder	\$200	\$150/Day	\$200/Day
Vermeer Mulcher/Processor	\$200	\$100/Day	\$200/Day
Krause 24' CultiPacker	\$200	\$8/Acre	\$10/Acre
Ogden 18' Pasture Harrow	\$200	\$100/Day	
Vtoreq 6 yd Scraper	\$200	\$100/Day	\$200/Day
Durabuilt 10' Boxed Scraper	\$200	\$75/Day	
Bush Hog 80" Rotary Tiller	\$200	\$50/Day	
Plotmaster Seeder	\$200	\$50 First Day	
Root Plow	\$200	\$10/Day	
Burn Control Unit	\$200	\$75/Day	\$100/Day
Controlled Burn Tools	\$25	Deposit Only	
Survey Equipment	\$100	\$15/Wk	N/A
Electric Seeder	\$25	Deposit Only	

* Daily or per use minimums may apply and multiple day discounts may be applicable.

**Clean up charge is \$50/hr with 1 hr minimum

Give us your opinion

As District Equipment Manager, I am always listening to the requests of the land owners as they stop by the office to fill out paperwork or to pick up our current rental equipment. Now is the time for you to put it down on paper and let us know what you, the landowners and taxpayers of Grundy County, would like to see added or upgraded to the District's rental equipment fleet.

Simply give us a call or stop by our office and give me your thoughts and ideas on what should be the newest addition to our soil conservation efforts. Or if you would like to email your suggestion, please send it to kevin.stover@swcd.mo.gov. We look forward to hearing from you.

Sincerely,

Kevin Stover

District Technician II

Tech Notes by Kevin Stover

Planting dates for the 1st quarter of 2012

As spring approaches, here are a few dates to keep in mind for acceptable planting periods for both cool and warm season grasses:

Cool Season Grasses:

Optimal period: March 16th through April 30th
Acceptable period: March 16th through May 31st

Warm Season Grasses:

Optimal period: April 16th through June 30th
Acceptable period: March 16th through June 30th

REMINDER: *It is always a good idea to take a current soil test. The application of excess nutrients is not only hard on the environment but the pocketbook as well.*

Grundy County Cost-Share Update for the 3rd Quarter

The demand for cost-share assistance for the first three quarters of the fiscal year 2012 has been very high. The District's initial allocation has been obligated and the first supplemental allocation is over 50% obligated. The outlook for a second supplemental allocation is positive but the actual dollar figures involved were not available at the time this article went to press. Year to date the approved practices are listed as follows:

DSL-5 Diversions – 1
DSL-44 Terraces w/Tile – 23
DWC-1 Ponds (Water Impoundment Reservoirs) -- 6
DWP-1 Dry Basins (Sediment Retention, Erosion, or Water Control Structure) – 5

There is a continued demand for cost-share assistance as the district's sign up list will show, but please do not let the length of the list discourage you from signing up. Also keep in mind that a systems approach to your property's conservation needs allows for a more comprehensive approach to fully meeting the needs of the ground. For example, a basin above a system of terraces may assist in reducing the runoff load for the top terrace as well as a pond below the terrace system would reduce the energy of the concentration due to the underground outlets once the terraces are complete. If you are interested in any fashion, please stop by or call our office for a cost-share application. In addition to Cost-Share technical assistance, non-cost-share assistance is available on a "as time allows" basis. If you would like to have a practice staked and designed without cost-share assistance please call or stop by our office to discuss your needs.

Kids Corner – Fun Food Facts

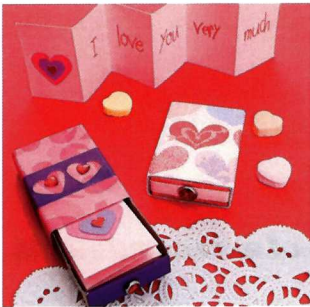
There are over 240 varieties of fish and shellfish sold in the fish markets and grocery stores!

Tootsie Rolls were the first wrapped penny candy in America.
The Tootsie Roll Company produces more than 16 million lollipops a day!

In Japan, Gerber's top selling baby food is a sardine dish!

This excerpt was found at <http://www.foodfunandfacts.com/foodtrivia.htm>

Kids Corner – Décor & Craft Ideas



Matchbox Message

by Catherine

Newman from **FamilyFun Magazine**

A tiny slide-out compartment holds big love and lets the recipient know he or she is unmatched.

Materials

- Wrapping or scrapbook paper
- Glue stick
- Small, empty matchbox
- Paper fastener
- Stickers, gems, or ribbon
- Paper or card stock

Instructions

1. Use wrapping or scrapbook paper and a glue stick to cover the outside of a small, empty matchbox as well as the front and inside of its insert.
2. Add a paper fastener to the front of the insert to serve as a pull, and decorate the box with stickers, gems, or ribbon, as desired.
3. Cut a strip of paper or card stock that will fit, folded accordion-style, into the insert (our strip is 1¾ by 7½ inches). Write a note on the strip, decorate it, and tuck it into the box.

This idea was found at <http://www.familyfun.go.com>

Kids Corner – Recipe



Layered Heart Cupcakes

To make this adorable treat, cut the tops off chocolate cupcakes, add a layer of pink frosting, punched a heart shape using a cookie cutter, then replace the top onto the cupcake. Fill the heart with more frosting to create a beautiful color combination of dark brown and pink.

This idea was found at <http://www.marthastewart.com>

