

# Woodland Erosion

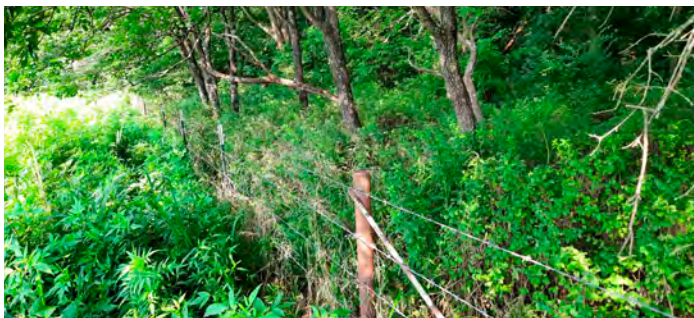
Woodland erosion is addressed by excluding livestock from woodland areas, and by developing a plan for harvesting trees in an appropriate manner to protect soil integrity and water quality. Funds are also available to address damage caused by improper harvest of trees.



DFR-04 Forest Plantation

## Eligible Conservation Practices

**C100 Timber Harvest Plan** is an incentive paid to a cooperator for obtaining and following a timber harvest plan. Timber harvest plans help to optimize yield and quality of forests while maintaining stand life and species composition.



N472 Livestock Exclusion

**DFR 04 Forest Plantation** encourages the conversion of marginal soils to less intensive use. Cost share is available for site preparation, tree plantation, seeding and other components needed to establish a new forest. This protects soil and improves water quality.



N655: Restoration of Skid Trails, Logging Roads, Stream Crossings and Log Landings

**N472** The **livestock exclusion practice** is used to fence livestock out of existing ponds, woodlands, sinkholes, streams or sensitive areas where vegetation, soil condition and water quality are in need of protection from livestock. Cost-share is provided for species appropriate exclusion fencing.

**N655 Restoration of Skid Trails, Logging Roads, Stream Crossings and Log Landings** helps to control gully erosion in these areas when they have been improperly constructed during a timber harvest. Cost-share is available for establishing vegetation on these disturbed areas.